

MACKENZIE

RED ANGUS

“Herd Established 1962”

**WELCOME TO CANADA’S OLDEST CONTINUOUSLY
RUNNING RED ANGUS BULL SALE!**

Welcome to our 39th annual Red Angus Bull Sale! Again we have our friend, Don Heggie, as a guest consigner with his Simmental bulls.

We realize that in recent times the cattle business has not been enjoyable from BSE to droughts to the disadvantage of a high Canadian dollar. We also know that this has left behind the cattlemen who plan to be in this business for the long haul. As an industry we have culled hard and are left with a strong Canadian cowherd which is functional and sound with no time for nonsense.

We are very proud of the bulls that we bring to you this year. They represent the cowherd that has supported our families through the good and bad times. You can count on the quality you have come to expect from our previous bull sales. Last year over 80% of the bulls sold to repeat customers which we feel is a testament of the faith our customers put in our program. We know that we need to continue to produce bulls with economic traits such as calving ease, growth and soundness. Our goal is for the progeny of our bulls to perform for you and those further down the production chain. We express our sincere gratitude to the bidders and buyers of our 2009 bull sale.

2009 was a very exciting year for us as being involved with the successful World Angus Forum held this past July at Spruce Meadows. We value the new friendships we’ve made and the time we were able to spend with old acquaintances.

Mark your calendar for Saturday March 20 - we look forward to visiting with past customers and always enjoy meeting new Angus enthusiasts.

- The Mackenzies

**— MACKENZIE RED ANGUS —
MOUNTAIN VIEW, AB.**

- Ted & Reva Mackenzie** -----Phone: 403-653-2336
- Ted & Reva Email** -----memmac@telusplanet.net
- Ed & Diana Mackenzie** -----Phone: 403-653-2129
- Randy & Karen Mackenzie** -----Phone: 403-653-4967
- Randy - Cell** -----403-317-5832
- Randy - Fax** -----403-653-4987
- Don & Linda Mackenzie** -----Phone: 403-653-2539
- Jade Mackenzie & Steve Brander** ---Phone: 403-653-2539
- Jade - Cell** -----403-394-5703
- Steve - Cell** -----403-462-9972
- Don - E-Mail** -----redmac@toughcountry.net
- Don - Fax** -----403-653-1927
- Don - Website** -----www.donmacredangus.com

SIGHT UNSEEN PURCHASE PROGRAM

We hope you can make it to the sale, but if you cannot, please feel free to use our “Sight Unseen Purchase Program.” Phone your selection criteria and price range to any of the sales staff or Mackenzies and we will try to fill your order. All bids will be kept in strictest confidence.

The program is simple - if we can’t meet your qualifications re criteria and/or price range, we won’t buy a bull for you.

**All purchases from the Sight Unseen Purchase
Program are satisfaction guaranteed.**

ON OFFER:

**68 Mackenzie 100% Red Angus
Yearling Bulls**

9 Simmental Yearling Bulls

ALL BULLS ARE FULLY TESTED & GUARANTEED

**NOTE - the Simmental Bulls will sell immediately
following the Red Angus Yearlings.**

SALE STAFF

— Auctioneer —

Brant Hurlburt - Fort Macleod Auction Market
Fort Macleod, Alta. Phone: 403-553-3315

— Ringmen —

Justin Keeley - Ph: 403-634-0144

Darren Shaw - Ph: 403-894-7575

**SALE DAY PHONES:
403-553-3315**

403-330-7330 (DON'S CELL)

403-317-5832 (RANDY'S CELL)

403-331-8674 (ED'S CELL)

403-394-5703 (JADE'S CELL)

403-462-9972 (STEVE'S CELL)

403-315-2238 (DON HEGGIE'S CELL)

403-715-6237 (TODD HEGGIE'S CELL)

**➤ Haul your own bulls home today and
receive a \$50.00/per bull discount
- OR -**

**We will take them back to the feedlot until
April 30th. All bulls returning to the feedlot
must be insured by the buyer.**

ACCOMMODATIONS IN FORT MACLEOD:

Sunset Motel - (403) 553-4448

Red Coat Inn - (403) 553-4434

**CHECK OUT THE CATALOGUE IN FULL
COLOR ON THE INTERNET:**

www.donmacredangus.com

— PERFORMANCE LEGEND —

AODAge of Dam	Feb. 11Feb. 11, 2010 Wt.
BWBirth Weight	ADGAvg Daily Gain on Test
205D205 Day Adj. Wt.	365D365 Day Adj. Wt
WIWeaning Index	SCScrotal Circ. in cm.
YIYearling Index	E.T.Embryo Transplant

— EXPLANATION OF EPD TERMS—

EPD = Expected Progeny Differences

They are another tool used to select a bull and are predictions on how each bull rates against his own contemporary group and the rest of the breed. **EPD Averages for all Red Angus calves registered in 2009** (these are the averages to compare the Red Angus bulls in this catalogue to):

<u>BW</u>	<u>WW</u>	<u>YW</u>	<u>Milk</u>	<u>Total Maternal</u>
+0.7	+29	+52	+15	+29

BW: This value predicts the difference in avg. birth weight of a bull's calves compared to breed averages.

WW: Indicates the ability of a sire's calves to grow from birth to weaning (expressed in pounds).

YW: Growth from birth to yearling (expressed in pounds)

Milk: A reflection of the milking ability of a bull's daughters. It compares the difference in gain between birth to weaning of a bull's daughter's calves compared to the calves from daughters of other sires evaluated.

TM: Calculated by using 1/2 WW + Milk.
Predicts weaning weight on a bull's daughter's calves.

— ACTUAL WEIGHTS —

Actual weights to be taken March 18, 2010, with **scrotal measurements and sale order to be available in printed form on sale day.**

— VIEWING —

The Mackenzie bulls are on test at **Claresholm Beef Producers** (Claresholm, Ab.) - Pens 66 & 67 - where they can be viewed until Wednesday, March 18th, when they will arrive at **Fort Macleod Auction Market**. We welcome everyone wishing to view the bulls.



We invite you to be our guests before the sale for presale viewing and to join us for complimentary lunch at 12:00 NOON.

A

LJC MISSION STATEMENT P27

(LJC Lancer 806 x Holden Hi Ho 753) #960383

2010 EPD's BW: -0.2 WW: +39 YW: +87 Milk: +31 TM: +50



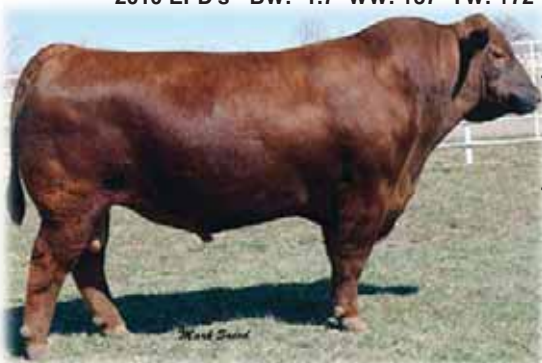
- Rock solid sire whose EPD profile ranks with the best of all time
- Balanced genetic profile enhanced by his ability to sire deep bodied, easy fleshing females and fast gaining, test station winning sons.

B

RED WEBR DOC HOLLIDAY 2N

(Red Milk Crk Cub 722 x Red Badlands Mr Beef 805) CAA: #1238369

2010 EPD's BW: -1.7 WW: +37 YW: +72 Milk: +22 TM: +41



- National Champion & "Peoples' Choice"
- Tremendous sound footed sire that adds style, soundness and performance to his calves

C

RED FINE LINE MULBERRY 26P

(Compass Mulberry 449M x Red Silveiras Redford) CAA: #1237972

2010 EPD's BW: +1.7 WW: +48 YW: +94 Milk: +23 TM: +47



- Two time Canadian Angus "Gold Show Bull of the Year"!
- His calves all over the world are turning heads and making breeders believe in him

semen available through
Brylor Semen Sales

D

MESSMER PACKER 008S

(Messmer Joshua 019P x VGM Top Pick 130) CAA: #1109534

2010 EPD's BW: -1.4 WW: +33 YW: +64 Milk: +23 TM: +40



- Packed full of growth potential, muscling, thickness and carcass dominance
- Only 5 herds used Packer in Canada so there's not many places to buy this great young sire's progeny



RED SIX MILE SAKIC 832S

(Red Six Mile Aviator 217P x Red Six Mile Cujo 800M) #1160318
2010 EPD's BW: +1.0 WW: +38 YW: +65 Milk: +28 TM: +47



- BW: 82 lbs.
- *Attractive, sound footed, deep bodied and full of red meat*
- *Offspring are light at birth and can be used on heifers or cows*



RED PERKS CHATEAU 309R

(Red Glacier Chateau 744 x Red 4L Rambo R621) CAA: #1291732
2010 EPD's BW: +1.6 WW: +37 YW: +73 Milk: +11 TM: +29



- BW: 89 lbs.
- *A prepotent sire that worked great on our cows*
- *Our World Angus Forum winners are his offspring*

semen available through
Brylor Semen Sales



RED RINGSTEAD MASTER PLAN 183P

(Master Plan 17M x Matrix 19D) CAA: #1233184
2010 EPD's BW: +3.0 WW: +40 YW: +75 Milk: +10 TM: +30



- BW: 98 lbs.
- *Ringstead's high selling bull in 2005*
- *He is massive and adds volume and style to his offspring*



RED ROD JACKPOT 138R

(KLC Jackpot 48M x Red LCC Heaven or Bust) CAA: #188190 BW: 98 lbs
2010 EPD's BW: +0.5 WW: +39 YW: +75 Milk: +20 TM: +39



- *Rodgers' Red Angus high selling bull in 2006*
- *Mike says 138R's mother is a "powerful producing female"*
- *His daughters are powerful bodied and excellent milkers*

EXPECTED PROGENY DIFFERENCES (EPDS)

Statistics generated for individual cattle through national genetic evaluations.

EPDs:

- ✓ allow breeders to estimate a young animal’s breeding value as a parent
- ✓ allow a fair comparison of breeding value by removing environmental bias such as climate, feed and special management
- ✓ best tool available to compare animals between herd, countries and year of birth
- ✓ help breeders make informed decisions regarding breeding stock selection by evaluating numerous traits such as growth-related traits (BW, WW, YW, Milk), carcass (REA, FAT, %IMF, etc.) and reproductive efficiency (CE, MCE, SC)
- ✓ estimate the group performance of one parent compared to the group performance of another parent, *assuming similar mates*

EPD’s evaluate group averages and offspring’s performance. They can not predict individual performance or weights.

For example, if Bull A (weaning weigh EPD of +10) and Bull B (WW of +60) were randomly mated with ten similar cows, we would expect the group average weaning weight of Bull A’s offspring to be 50 lbs. lighter than that of Bull B’s (60 - 10 = 50).

Calf	A	B
1	500	400
2	510	450
3	520	500
4	530	550
5	540	600
6	560	600
7	570	650
8	580	700
9	590	750
10	600	800
Avg.	550	600

BULL A and **BULL B** are mated with the **COW HERD** to produce **GROUP A OFFSPRING** (Avg. 550 lbs) and **GROUP B OFFSPRING** (Avg. 600 lbs).

Accuracy – reflects the reliability of the EPD value. High accuracy values (>.80) mean the EPD value is closer to the true breeding value than an EPD value with a lower accuracy (<.20).

Note that not all calves from Bull B have a higher weaning weight, but the average is 50 lbs higher.

EPD Averages for 2009 Born Red Angus Calves	
<i>26,366 RED Calves Registered</i>	
BW	+0.7
WW	+29
YW	+52
Milk	+15
TM	+29
CE	+4.5
MCE	+3.2
SC	
REA	+0.05
FAT	n/a
%IMF	n/a
STAY	+9

To evaluate seedstock, use EPDs, pedigree and visual assessment. With EPDs, the concept of “intermediate optimums” works best. Selection for one trait or for extremes generally results in unexpected consequences due to genetic correlations - for example, intense selection for high yearling weight will also increase birth weight. Successful cattle breeding requires a thoughtful and balanced approach to optimize fertility, growth and carcass merit while improving profitability and efficiency.



The CACP Story

In 1999 the Canadian Angus Association created the Canadian Angus Certification Program (CACP). This program is designed to source verify cattle that have at least one registered Angus parent, and promote these cattle in the beef marketplace. Advantages for producers using CACP tags are:

- **Feeder Fax** - A listing service for feeder cattle, updated regularly and available on the CAA website.
- **Replacement Female Listing** - Similar to the Feeder Fax, these listings focus on CACP tagged heifers or cows.
- **Organized CACP Auction Market Sales** - over 60 sales held across Canada annually all advertising CACP tags.
- **Meeting National ID Requirements**

The Canadian Angus Association realized that by selling "Angus" ear tags an opportunity to create a source verified, Angus branded beef product existed. Angus Pride (Cargill) and Butcher Block (Cysco) are working with the Canadian Angus Association to source Angus cattle. Also, Canadian Angus are still using green tags.

The tag, itself, is lime green, two piece, and tamper-proof. CACP tags qualify under the Canadian Cattle Identification Program.

TO ENROLL CATTLE IN THE CANADIAN ANGUS CERTIFICATION PROGRAM

1. Ensure registered seed stock have been transferred to your ownership.
2. Contact the Canadian Angus Association (see below) to order tags
3. Tags will be shipped in a timely manner.
4. Complete the program agreement form accompanying the tags and return to the Canadian Angus Association.
5. Tag calves as your management style dictates.

***"If beef is your business...
Angus is your breed"***

For More Information on the Canadian Angus Certification Program or to order your "green tags", please contact:

CANADIAN ANGUS ASSOCIATION

Suite 142, 6715 8 Street N.E., Calgary, Alberta T2E 7H7
1-888-571-3580 • Visit our website: www.cdnangus.ca



100

RED JEWEL CHATEAU 100W

Male (ET) JSM 100W January 18 2009 #1536480

RED GLACIER CHATEAU 744 OSF
RED PERKS CHATEAU 309R OSF (1291732)
 RED PERKS MISS RAMBO 8105 OSF
 RED MEM GRAND CANYON 203M
RED JEWEL PAISLEY 27P (1231791)
 RED JEWEL MISS LACEY 64L

AOD	BW	205D	WI	365	YI	ADG	Feb 11
ET	86	700	100	1260	100	3.80	1325

• A big, powerful E.T. calf

2010 EPD's
BW +2.8
WW +40
YW +75
Milk +16
TM +36



101

RED JEWEL CHATEAU 101W

Male JSM 101W January 21 2009 #1503762

RED GLACIER CHATEAU 744 OSF
RED PERKS CHATEAU 309R OSF (1291732)
 RED PERKS MISS RAMBO 8105 OSF
 RED MAC CAP 62F
RED JEWEL MISS BARDO 18T (1402243)
 RED MAC MISS PATHY 48Z

AOD	BW	205D	WI	365	YI	ADG	Feb 11
2	84	603	92	1225	109	3.77	1159

• Dam is a class winner at the Alberta World Forum Futurity Show

2010 EPD's
BW +3.3
WW +35
YW +65
Milk +11
TM +28



102

RED CRAIG ON FIRE 102W

Male LCM 102W February 02 2009 #1494871

RED SIX MILE AVIATOR 217P
RED SIX MILE SAKIC 832S OSF (1332064)
 RED SIX MILE SIERA 257P
 RED PERKS CHATEAU 309R OSF
RED CRAIG MISS FIREFLY 3T (1375103)
 RED CRAIG MISS FIREFLY 3R

AOD	BW	205D	WI	365	YI	ADG	Feb 11
2	78	743	118	1366	109	3.57	1292

- **HEIFER BULL - 1/2 Interest Retained**
- He and his mother were class winners at the WAF
- Light birth weight, loads of red meat, very eye appealing!
- **HERD BULL**

2010
EPD's
BW
+1.8
WW
+38
YW
+67
Milk
+19
TM
+37



103

RED JEWEL SAKIC 103W

Male JSM 103W January 26 2009 #1538541

RED SIX MILE AVIATOR 217P
RED SIX MILE SAKIC 832S OSF (1332064)
 RED SIX MILE SIERA 257P
 RED BUF CRK HOBO 1961 OSF
RED JEWEL MISS CRESTA 6T (1374917)
 RED JEWEL PEPPY 15N

AOD	BW	205D	WI	365	YI	ADG	Feb 11
2	69	656	104	1270	107	3.92	1209

- **HEIFER BULL - a Calving Ease Bull**
- All the muscle, thickness and performance as you will find from a two year old dam

Proj '10
EPD's
BW
+0.1
WW
+30
YW
+55
Milk
+23
TM
+38

105

RED MAC CHATEAU 105W

Male ZDM 105W January 28 2009 #1495637

RED PERKS CHATEAU 309R OSF

RED JEWEL CHATEAU 120T (1374930)

RED JEWEL MISS LUCKY LADY 51L

RED MEM GRAND CANYON 203M

RED MAC MISS DREAMY 9S OSF (1317252)

RED MAC MISS DREAMY 6N

AOD	BW	205D	WI	365	YI	ADG	Feb 11
3	80	584	92	1123	95	3.69	1098

• HEIFER BULL

2010 EPD's
BW +0.4
WW +29
YW +58
Milk +17
TM +31

106

RED JEWEL CAP 106W

Male (ET) JSM 106W January 29 2009 #1536110

RED COAT

RED MAC CAP 62F (852432)

BLACK MAC MISS ATLAS 3W

RED FCC RAMBO 502 OSF

RED BROX CRESTA 4B (745414)

RED BROX BRY LORD 3X

AOD	BW	205D	WI	365	YI	ADG	Feb 11
ET	72	585	100	1141	100	3.47	1153

• HEIFER BULL

• An E.T. calf from an "Elite Dam", Red Brox Cresta 4B

Proj '10 EPD's
BW +1.2
WW +30
YW +53
Milk +15
TM +30

109

RED JEWEL CHATEAU 109W

Male JSM 109W January 29 2009 #1503770

RED GLACIER CHATEAU 744 OSF

RED PERKS CHATEAU 309R OSF (1291732)

RED PERKS MISS RAMBO 8105 OSF

RED SSS POWERSTROKE 245J

RED JEWEL MISS LILLY 34L (1066017)

RED JEWEL JUSTINE 91J

AOD	BW	205D	WI	365	YI	ADG	Feb 11
8	74	512	80	1110	106	3.88	1106

• HEIFER BULL

2010 EPD's
BW +0.0
WW +24
YW +48
Milk +8
TM +20



Again this year, as in last year, each Red Angus bull purchased through this sale will receive a \$25.00 coupon to purchase the lime green ear tags that we feel will definitely increase the market value of your calves.

Lot #110



110

RED JEWEL CHATEAU 110W

Male JSM 110W January 29 2009 #1503771

RED GLACIER CHATEAU 744 OSF

RED PERKS CHATEAU 309R OSF (1291732)

RED PERKS MISS RAMBO 8105 OSF

RED MAC CAP 62F

RED MAC MISS SHOWY 38K (1002769)

RED MAC MISS FAITH 45F

AOD	BW	205D	WI	365	YI	ADG	Feb 11
9	69	572	92	1119	97	3.35	1130

• HEIFER BULL

2010 EPD's
BW -0.8
WW +25
YW +53
Milk +11
TM +23

Lot #112



112

RED JEWEL SAKIC 112W

Male JSM 112W February 02 2009 #1503772

RED SIX MILE AVIATOR 217P

RED SIX MILE SAKIC 832S OSF (1332064)

RED SIX MILE SIERA 257P

RED BFCK CHEROKEE CNYN 4912 OSF

RED JEWEL MISS RULER 10T (1374921)

RED JEWEL MISS RULER 22R

AOD	BW	205D	WI	365	YI	ADG	Feb 11
2	82	651	101	1299	113	3.75	1209

• HEIFER BULL

• A favorite since birth and out of an excellent producing two year old

• HERD BULL

2010 EPD's
BW +1.7
WW +40
YW +69
Milk +25
TM +45

114



RED JEWEL CHATEAU 114W

Male JSM 114W February 04 2009 #1503773

RED GLACIER CHATEAU 744 OSF

RED PERKS CHATEAU 309R OSF (1291732)

RED PERKS MISS RAMBO 8105 OSF

RED JR HOLDEN SPOTLIGHT 143

RED JEWEL CRESTA 4R (1288978)

RED BROX CRESTA 4B

AOD	BW	205D	WI	365	YI	ADG	Feb 11
4	72	619	100	1072	80	2.90	1070

• HEIFER BULL

2010 EPD's
BW -2.0
WW +26
YW +55
Milk +17
TM +30

115



RED MAC PACKER 115W

Male ZDM 115W February 03 2009 #1495638

RED MESSMER JOSHUA 019P OSF

RED MESSMER PACKER S008 OSF (1481359)

RED MESSMER MILLIE 124P OSF

RED RD DREAMMAKER OF 3R

RED MAC MISS DREAMY 6N (1167127)

RED MAC MISS CREST 75W

AOD	BW	205D	WI	365	YI	ADG	Feb 11
6	96	686	108	1161	84	2.78	1180

- Mother always produces the top selling bulls
- Dam is a great consistent producer
- East Cardston Colony bought her 2008 bull

2010 EPD's
BW +2.1
WW +36
YW +70
Milk +22
TM +41

116



RED MAC CHATEAU 116W

Male ZDM 116W February 5 2009 #1495641

RED PERKS CHATEAU 309R OSF

RED JEWEL CHATEAU 120T (1374930)

RED JEWEL MISS LUCKY LADY 51L

RED LCHMN GRND CANYON 1244G OSC

RED MAC MISS ROSEBUD 23S OSF (1317248)

RED MAC MISS SHOWY 93K

AOD	BW	205D	WI	365	YI	ADG	Feb 11
3	85	653	104	1218	100	3.67	1178

• HEIFER BULL

2010 EPD's
BW +1.6
WW +34
YW +646
Milk +17
TM +34



**TURNING
INFORMATION INTO
KNOWLEDGE**

**A Big THANK YOU to
Kevin Hiemstra,
Paul Christiansen, and
Steve Brander -**

PFIZER ANIMAL HEALTH

**for their
contribution for our 2010
Buyers Draw**

Lot #119



119

RED JEWEL JACKPOT 119W

Male JSM 119W February 11 2009 #1503776

RED KLC JACKPOT 48M

RED ROD JACKPOT 138R (1288190)

RED ROD HB YANKE 638G

RED BRYLOR MASTER PLAN 17M

RED RED-ROCK COPPER QUEEN 255P (1205242)

RED RED-ROCK COPPER QUEEN 256M

AOD	BW	205D	WI	365	YI	ADG	Feb 11
5	83	670	107	1358	121	4.94	1336

- If you sell cattle by the pound, you will love 119W
- **HERD BULL**

2010 EPD's
BW +0.5
WW +34
YW +68
Milk +17
TM +34

122

RED JEWEL JACKPOT 122W

Male JSM 122W February 12 2009 #1503778

RED KLC JACKPOT 48M

RED ROD JACKPOT 138R (1288190)

RED ROD HB YANKE 638G

RED BJR RAMBLER 5162 OSF

RED JEWEL MCKAYLA 7M (1116487)

RED MAC MISS SHOWY 111K

AOD	BW	205D	WI	365	YI	ADG	Feb 11
7	81	572	90	1098	93	3.78	1083

- **HEIFER BULL**

2010 EPD's
BW -0.2
WW +28
YW +51
Milk +15
TM +29

123

RED JEWEL CHATEAU 123W

Male JSM 123W February 12 2009 #1503780

RED GLACIER CHATEAU 744 OSF

RED PERKS CHATEAU 309R OSF (1291732)

RED PERKS MISS RAMBO 8105 OSF

RED PERKS ADVANCE 121R

RED JEWEL MISS ATLAS 10R (1258506)

RED JEWEL JESSIE 46J

AOD	BW	205D	WI	365	YI	ADG	Feb 11
4	91	594	92	1169	102	3.47	1123

2010 EPD's
BW +3.4
WW +32
YW +62
Milk +9
TM +25



127

RED MAC MASTERPLAN 127W

Male ZDM 127W February 15 2009 #1495642

RED BRYLOR MASTER PLAN 17M

RED RINGSTEAD MASTER PLAN 183P (1233184)

RED 77 LORRAINE 17H

RED BIG SKY MAF STATEMENT 199

RED MAC MISS PEPPY 13N (1167137)

RED MAC MISS SHOWY 93K

AOD	BW	205D	WI	365	YI	ADG	Feb 11
6	87	644	102	1215	101	3.96	1192

- High producing dam has explosive EPD's in a moderate, eye appealing package
- Sold 2007 bull to Willow Creek Colony

2010 EPD's
BW +1.8
WW +32
YW +65
Milk +18
TM +34

130

RED MAC JACKPOT 130W

Male ZDM 130W February 17 2009 #1495643

RED KLC JACKPOT 48M

RED ROD JACKPOT 138R (1288190)

RED ROD HB YANKE 638G

RED BJR RAMBLER 5162 OSF

RED MAC MISS RAMBLER 13L (1048500)

MAC MISS PATHY 24A

AOD	BW	205D	WI	365	YI	ADG	Feb 11
8	86	630	99	1214	103	3.61	1177

2010 EPD's
BW +1.1
WW +31
YW +60
Milk +18
TM +33

131

RED JEWEL CHATEAU 131W

Male JSM 131W February 17 2009 #1503786

RED PERKS CHATEAU 309R OSF

RED JEWEL CHATEAU 120T (1374930)

RED JEWEL MISS LUCKY LADY 51L

RED BJR RAMBLER 5162 OSF

RED JEWEL BARDO 19S (1363406)

RED MAC MISS PATHY 48Z

AOD	BW	205D	WI	365	YI	ADG	Feb 11
3	81	584	92	1183	106	3.71	1100

• HEIFER BULL

2010 EPD's
BW +0.9
WW +28
YW +54
Milk +13
TM +27

132

RED JEWEL JACKPOT 132W

Male JSM 132W February 18 2009 #1503787

RED KLC JACKPOT 48M

RED ROD JACKPOT 138R (1288190)

RED ROD HB YANKE 638G

RED MAC CAP 62F

RED JEWEL MISS LADY BUG 42L (1050523)

RED BROX CRESTA 4B

AOD	BW	205D	WI	365	YI	ADG	Feb 11
8	84	576	90	1097	92	3.22	1062

• HEIFER BULL

2010 EPD's
BW +1.0
WW +31
YW +59
Milk +18
TM +33

133

RED GEM MASTERPLAN 133W

Male AAM 133W February 18 2009 #1495650

RED BRYLOR MASTER PLAN 17M

RED RINGSTEAD MASTER PLAN 183P (1233184)

RED 77 LORRAINE 17H

RED MAC TAILOR MADE 7J

RED GEM MADDIE 5M (1116379)

RED GEM ELLIE 79E

AOD	BW	205D	WI	365	YI	ADG	Feb 11
7	82	567	89	1100	94	3.37	1064

• HEIFER BULL

2010 EPD's
BW +4.3
WW +39
YW +73
Milk +10
TM +29

Lot #135



135

RED JEWEL MASTERPLAN 135W

Male JSM 135W February 25 2009 #1503792

RED BRYLOR MASTER PLAN 17M

RED RINGSTEAD MASTER PLAN 183P (1233184)

RED 77 LORRAINE 17H

RED MLK CRK CUB 722 OSF

RED JEWEL KITTEN 4P (1231769)

RED JEWEL MOCHA 9M

AOD	BW	205D	WI	365	YI	ADG	Feb 11
5	81	694	112	1325	111	3.80	1261

- HEIFER BULL with pedigree, performance & eye appeal!
- Will look super on anyone's pasture and work well on heifers or cows
- HERD BULL

2010 EPD's
BW +1.3
WW +40
YW +76
Milk +18
TM +38

137

RED CRAIG JACKPOT 137W

Male LCM 137W February 27 2009 #1494872

RED KLC JACKPOT 48M

RED ROD JACKPOT 138R (1288190)

RED ROD HB YANKE 638G

RED CRCC BLAZE'N THROUGH 888G

RED MAC MISS BLAZE 33L (1048484)

BLACK MAC MISS ATLAS 3W

AOD	BW	205D	WI	365	YI	ADG	Feb 11
8	79	627	100	1178	97	3.76	1123

• HEIFER BULL

2010 EPD's
BW +1.3
WW +31
YW +61
Milk +20
TM +35

138

RED JEWEL MASTERPLAN 138W

Male JSM 138W February 27 2009 #1503794

RED BRYLOR MASTER PLAN 17M

RED RINGSTEAD MASTER PLAN 183P (1233184)

RED 77 LORRAINE 17H

RED MAC CAP 62F

RED JEWEL KANDY 98K (1007982)

RED JEWEL MISS RULER 17A

AOD	BW	205D	WI	365	YI	ADG	Feb 11
9	94	661	104	1234	101	4.02	1178

• Extremely impressive individual, powerful and long hiped, correct and attractive!

2010 EPD's
BW +3.5
WW +40
YW +75
Milk +16
TM +36

Lot #139



139

RED MAC JACKPOT 139W

Male ZDM 139W March 01 2009 #1495644

RED KLC JACKPOT 48M

RED ROD JACKPOT 138R (1288190)

RED ROD HB YANKE 638G

RED LMB GOLDEN BOY 719 OSF

RED MAC MISS GOLDY 20N (1167130)

RED GEM FOXY LADY 47F

AOD	BW	205D	WI	365	YI	ADG	Feb 11
6	91	642	101	1284	113	4.06	1209

• A bull that will add pounds to your calves!
• Check him out on Sale Day!!

2010 EPD's
BW +3/1
WW +42
YW +73
Milk +18
TM +39

140

RED JEWEL MASTERPLAN 140W

Male JSM 140W March 02 2009 #1503795

RED BRYLOR MASTER PLAN 17M
RED RINGSTEAD MASTER PLAN 183P (1233184)
 RED 77 LORRAINE 17H
 RED FORSTER DURANGO 7009ET
RED DKF MISS DURANGO 65M (1109639)
 RED DKF SALLY 5Y

AOD	BW	205D	WI	365	YI	ADG	Feb 11
7	100	645	100	1313	118	4.29	1232

- Mother was Junior Champion Female at Agribition 2003
- She has two sons working at Selmar & Marty Peterson's Ranch and a son at Pinhorn Grazing Association

2010 EPD's
BW +5.9
WW +43
YW +76
Milk +12
TM +33

141

RED JEWEL JACKPOT 141W

Male JSM 141W March 03 2009 #1503796

RED KLC JACKPOT 48M
RED ROD JACKPOT 138R (1288190)
 RED ROD HB YANKE 638G
 RED LCHMN GRND CANYON 1244G OSC
RED JEWEL PARIS 9P OSF (1231771)
 RED MAC MISS CHEROK 14F

AOD	BW	205D	WI	365	YI	ADG	Feb 11
5	74	722	118	1310	104	3.55	1234

- **HEIFER BULL** with tremendous volume & capacity
- **HERD BULL**

2010 EPD's
BW -0.2
WW +40
YW +79
Milk +23
TM +43

142

RED MAC MASTERPLAN 142W

Male ZDM 142W March 03 2009 #1495645

RED BRYLOR MASTER PLAN 17M
RED RINGSTEAD MASTER PLAN 183P (1233184)
 RED 77 LORRAINE 17H
 RED FCC RAMBO 502 OSF
RED MAC MS RAMPAGE 22L (1175382)
 RED BJR TIDY BEE 677-6186

AOD	BW	205D	WI	365	YI	ADG	Feb 11
8	100	707	111	1329	110	3.98	1252

- **HERD BULL**
- A bull with added thickness and volume that will work well on cows

2010 EPD's
BW +4.4
WW +44
YW +76
Milk +15
TM +37

144

RED MAC MASTERPLAN 144W

Male ZDM 144W March 08 2009 #1495648

RED BRYLOR MASTER PLAN 17M
RED RINGSTEAD MASTER PLAN 183P (1233184)
 RED 77 LORRAINE 17H
 RED MAC CAP 62F
RED MAC MISS SHOWY 93K (1002745)
 RED HEAD ROSEBUD 27E

AOD	BW	205D	WI	365	YI	ADG	Feb 11
9	82	717	116	1224	89	2.88	1141

- The Rosebud cow family are foundation producing females
- They have always made me money!

2010 EPD's
BW +1.0
WW +39
YW +77
Milk +16
TM +35

Lot #145



145

RED JEWEL JACKPOT 145W

Male JSM 145W March 12 2009 #1503797

RED KLC JACKPOT 48M

RED ROD JACKPOT 138R (1288190)

RED ROD HB YANKE 638G

RED LCHMN GRND CANYON 1244G OSC

RED JEWEL PINA COLODA 10P OSF (1231772)

RED JEWEL MISS LADY BUG 42L

AOD	BW	205D	WI	365	YI	ADG	Feb 11
5	82	694	112	1245	97	3.39	1148

• His dam was the calf at side of the Grand Champion Female - Lethbridge Gold Show 2004

2010
EPD's
BW
+0.5
WW
+40
YW
+77
Milk
+22
TM
+42

Lot #201



201

RED MEM SUPER VISION 201W

Male MTE 201W January 26 2009 #1508885

RED GLACIER CHATEAU 744 OSF

RED 4L SUPER VISION R2292 OSF (1410274)

RED 4L MR RAMBO R709 OSF

RED TASSEL CHIVALRY 1G OSF

RED ALLAVON LARKABA 3N (1186043)

RED ALLAVON LARKABA 8L

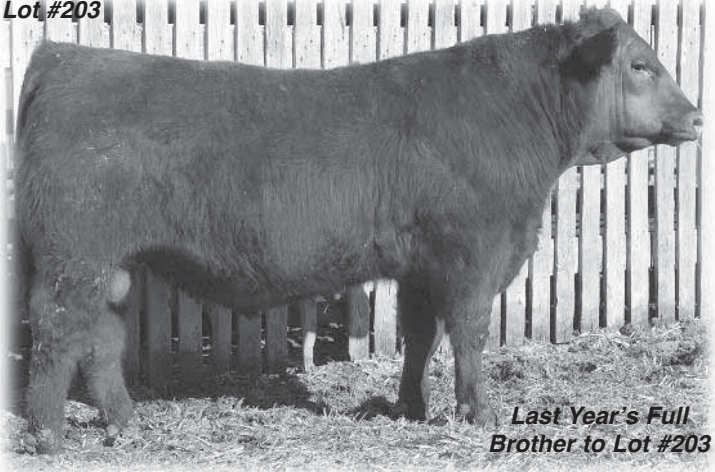
AOD	BW	205D	WI	365	YI	ADG	Feb 11
6	86	707	109	1414	121	4.47	1438

• Heaviest bull to start test; heaviest bull at end of test with almost a 4 1/2 lb. gain!
 • If you want to add pounds at selling time while retaining his heifers - this is that kind of bull! • **HERD BULL**

2010
EPD's
BW
+1.9
WW
+34
YW
+60
Milk
+19
TM
+36

Mackenzie Red Angus Bull Sale - March 20, 2010

Lot #203



*Last Year's Full
Brother to Lot #203*

203

RED MEM DOC 203W

Male MTE 203W January 29 2009 #1508886

RED MLK CRK CUB 722 OSF

RED WEBR DOC HOLLIDAY 2N OSF (1238369)

RED WEBR MS DOLLY 1L OSF

RED BADLANDS BONUS 702

RED MEM LARKABELLE 20L (1065169)

RED MEM LARKABELLE 10J

AOD	BW	205D	WI	365	YI	ADG	Feb 11
8	72	652	102	1218	96	3.75	1245

• Light birth weight with lots of performance

2010 EPD's
BW -0.7
WW +33
YW +63
Milk +21
TM +38

204

RED MEM DOC 204W

Male MTE 204W January 29 2009 Not Registered

RED MLK CRK CUB 722 OSF

RED WEBR DOC HOLLIDAY 2N OSF (1238369)

RED WEBR MS DOLLY 1L OSF

RED BADLANDS BONUS 702

RED MEM INATEXXI 38P (1309979)

RED SOUTHOLM INATEXXI 30D

AOD	BW	205D	WI	365	YI	ADG	Feb 11
3	87	650	99	1214	96	3.86	1240

• Light birth weight with lots of performance

2010 EPD's
BW +1.9
WW +35
YW +61
Milk +17
TM +35

207

RED MEM DOC 207W

Male MTE 207W February 02 2009 #1508858

RED MLK CRK CUB 722 OSF

RED WEBR DOC HOLLIDAY 2N OSF (1238369)

RED WEBR MS DOLLY 1L OSF

RED HOLDEN HI HO 7151 OSF

RED MEM HI STORM 31S (1330970)

RED MEM MISS FARGO 41N

AOD	BW	205D	WI	365	YI	ADG	Feb 11
3	76	692	108	1240	94	3.61	1219

• Light birth weight, good performance and great hair coat

2010 EPD's
BW +0.6
WW +41
YW +73
Milk +16
TM +37

209



RED MEM PACKER 209W

Male MTE 209W February 03 2009 #1508860

RED MESSMER JOSHUA 019P OSF
RED MESSMER PACKER S008 OSF (1481359)
 RED MESSMER MILLIE 124P OSF
 RED SOUTH VIEW NO EQUAL 28H
RED JAS LASSIE 16R (1269783)
 RED GIRVINMERE LASSIE 30J

AOD	BW	205D	WI	365	YI	ADG	Feb 11
4	70	601	93	1144	93	3.47	1133

• HEIFER BULL

2010 EPD's
BW -1.4
WW +29
YW +52
Milk +13
TM +28

Lot #213



213



RED MEM MULBERRY 213W

Male MTE 213W February 05 2009 #1508862

RED COMPASS MULBERRY 449M
RED FINE LINE MULBERRY 26P OSF AMF (1237972)
 RED DUS FAYETTE 8G
 RED BAR-E-L APPROVAL 4L
RED PIRO MARTA 507R (1263566)
 RED ALALTA DYNAMIC MARTA 53D

AOD	BW	205D	WI	365	YI	ADG	Feb 11
4	83	642	98	1285	110	3.98	1260

• HERD BULL

• Complete package, nice birth weight, good mother, great performance, muscle and style!

2010 EPD's
BW +1.9
WW +39
YW +72
Milk +16
TM +35

214



RED MEM PACKER 214W

Male MTE 214W February 07 2009 #1508864

RED MESSMER JOSHUA 019P OSF
RED MESSMER PACKER S008 OSF (1481359)
 RED MESSMER MILLIE 124P OSF
 RED BJR AH BRANDED BEEF L107 OSF
RED MEM OAKLEAF 6S (1366966)
 RED BRYLOR OAKLEAF 49D

AOD	BW	205D	WI	365	YI	ADG	Feb 11
3	85	611	92	1192	99	3.57	1140

2010 EPD's
BW +2.0
WW +37
YW +64
Milk +14
TM +32

215 RED MEM MISSION STATEMENT 215W



Male MTE 215W February 07 2009 #1508866

RED LJC LANCER 806 OSF
RED LJC MISSION STATEMENT P27 OSF (1318819)
 RED LJC HANNAH 106 OSF
 RED TR TRAIL BLAZER 81M
RED MEM COUNTESS 54T (1384821)
 RED MEM COUNTESS 19K

AOD	BW	205D	WI	365	YI	ADG	Feb 11
2	72	686	108	1331	110	4.14	1244

• **HEIFER BULL** that will put some pounds on his calves at selling time!

2010 EPD's
BW -1.0
WW +33
YW +69
Milk +24
TM +41

216 RED MEM JUDGE 216W



Male MTE 216W February 07 2009 #1508863

RED BECKTON JULIAN GG B571 OSF
RED MESSMER JUDGE 36N OSF (1253637)
 RED MESSMER ESTHER 2254 OSF
 RED BJR AH BRANDED BEEF L107 OSF
RED MEM COUNTESS 8R (1287337)
 RED MEM COUNTESS 19K

AOD	BW	205D	WI	365	YI	ADG	Feb 11
4	73	615	95	1169	95	3.41	1146

• **HEIFER BULL**

2010 EPD's
BW -1.3
WW +27
YW +54
Milk +13
TM +26

217 RED MEM SUPER VISION 217W



Male MTE 217W February 8 2009 #Pending

RED GLACIER CHATEAU 744 OSF
RED 4L SUPER VISION R2292 OSF (1410274)
 RED 4L MR RAMBO R709 OSF
 RED BRYLOR ICON 11H
RED MEM INATEX 31L (1053711)
 RED MEM INATEX 18H

AOD	BW	205D	WI	365	YI	ADG	Feb 11
8	69	641	100	1234	100	3.41	1222

2010 EPD's
BW +1.9
WW +30
YW +58
Milk +19
TM +33

218 RED MEM SUPER VISION 218W



Male MTE 218W February 8 2009 #Pending

RED GLACIER CHATEAU 744 OSF
RED 4L SUPER VISION R2292 OSF (1410274)
 RED 4L MR RAMBO R709 OSF
 RED BRYLOR ICON 11H
RED MEM INATEX 31L (1053711)
 RED MEM INATEX 18H

AOD	BW	205D	WI	365	YI	ADG	Feb 11
8	65	704	100	1253	100	3.70	1260

• *Super Vision is making tremendous females that are highly productive and sons that have great performance*

2010 EPD's
BW +1.9
WW +30
YW +58
Milk +19
TM +33

219

RED MEM DOC 219W



Male MTE 219W February 09 2009 #1508896

RED MLK CRK CUB 722 OSF

RED WEBR DOC HOLLIDAY 2N OSF (1238369)

RED WEBR MS DOLLY 1L OSF

RED ALBERN EDGE 34'98

RED MOOSE CREEK LANA 107K (1018280)

RED BRAMSHOTT LANA 483F

AOD	BW	205D	WI	365	YI	ADG	Feb 11
9	76	626	97	1083	78	2.67	1083

• **HEIFER BULL**

2010 EPD's
BW -1.0
WW +35
YW +63
Milk +16
TM +34

224

RED MEM DOC 224W



Male MTE 224W February 10 2009 #1508868

RED MLK CRK CUB 722 OSF

RED WEBR DOC HOLLIDAY 2N OSF (1238369)

RED WEBR MS DOLLY 1L OSF

RED BASIN SENSATION 702E OSF

RED MEM COUNTESS 21R (1287359)

RED MEM COUNTESS 16N

AOD	BW	205D	WI	365	YI	ADG	Feb 11
4	78	654	101	1113	78	2.86	1097

• **HEIFER BULL**

• We A.I.'ed Doc Holiday to cows and heifers last year and haven't touched any of them

2010 EPD's
BW -1.0
WW +34
YW +65
Milk +17
TM +34

225

RED MEM MULBERRY 225W



Male MTE 225W February 10 2009 #1508897

RED COMPASS MULBERRY 449M

RED FINE LINE MULBERRY 26P OSF AMF (1237972)

RED DUS FAYETTE 8G

RED KBJ SAM'S PROSPECTOR 133Z

RED JALORMI T GOLDETTE 62E (815142)

RED TRENTIN GOLDETTE 17Z

AOD	BW	205D	WI	365	YI	ADG	Feb 11
14	78	706	110	1273	97	3.55	1238

• This calf's mother has been around for a reason - she always produces a good one!

2010 EPD's
BW -0.7
WW +34
YW +65
Milk +22
TM +39



Again this year, as in last year, each Red Angus bull purchased through this sale will receive a \$25.00 coupon to purchase the lime green ear tags that we feel will definitely increase the market value of your calves.

Lot #226



226 RED MEM MISSION STATEMENT 226W



Male MTE 226W February 11 2009 #1508903

RED LJC LANCER 806 OSF

RED LJC MISSION STATEMENT P27 OSF (1318819)

RED LJC HANNAH 106 OSF

RED BJR MAKE MY DAY 981 OSF

RED PIRO COCOA 403P (1212457)

RED PIRO COCOA 229M

AOD	BW	205D	WI	365	YI	ADG	Feb 11
5	74	636	99	1371	126	4.37	1335

• **HERD BULL** with a 74 lb. birth weight and 4.37 lbs. gain - this guy is a meat machine!

2010 EPD's
BW -1.7
WW +30
YW +66
Milk +24
TM +38

227 RED MEM PACKER 227W



Male MTE 227W February 11 2009 #1508899

RED MESSMER JOSHUA 019P OSF

RED MESSMER PACKER S008 OSF (1481359)

RED MESSMER MILLIE 124P OSF

RED RD DIVIDEND 7F

RED MEM INATEXXI 8K (1005683)

RED SOUTHOLM INATEXXI 30D

AOD	BW	205D	WI	365	YI	ADG	Feb 11
9	80	682	106	1316	108	3.78	1295

• I think you are going to like the style and muscle in these Packer calves

• **HERD BULL**

2010 EPD's
BW -0.2
WW +30
YW +56
Milk +18
TM +33

228 RED MEM DOC 228W



Male MTE 228W February 11 2009 #1508871

RED MLK CRK CUB 722 OSF

RED WEBR DOC HOLLIDAY 2N OSF (1238369)

RED WEBR MS DOLLY 1L OSF

RED MR. AMBER'S JACKPOT 3M

RED MEM FAYET 48R (1309974)

RED BAR THREE H FAYET 4H

AOD	BW	205D	WI	365	YI	ADG	Feb 11
4	79	592	90	1148	95	3.29	1110

• **HEIFER BULL**

2010 EPD's
BW +0.4
WW +30
YW +56
Milk +14
TM +29



229

RED MEM PACKER 229W

Male MTE 229W February 11 2009 #1508902

RED MESSMER JOSHUA 019P OSF

RED MESSMER PACKER S008 OSF (1481359)

RED MESSMER MILLIE 124P OSF

RED BAKERS CENTURY

RED MEM OAKLEAF 41M (1129245)

RED MEM OAKLEAF 3F

AOD	BW	205D	WI	365	YI	ADG	Feb 11
7	79	682	106	1316	108	4.02	1298

- **HERD BULL** that's looked great since birth
- He has the numbers and performance to tie it all together!

2010 EPD's
BW +0.6
WW +34
YW +62
Milk +22
TM +38

230

RED MEM MULBERRY 230W

Male MTE 230W February 11 2009 #1508901

RED COMPASS MULBERRY 449M

RED FINE LINE MULBERRY 26P OSF AMF (1237972)

RED DUS FAYETTE 8G

RED OARLOCK JADE 6J

RED JENSEN MISS BOOTY 43L (1066313)

RED H70 QUANTOCK 61 MISS 242C

AOD	BW	205D	WI	365	YI	ADG	Feb 11
8	90	596	89	1186	101	3.63	1163

2010 EPD's
BW +1.4
WW +33
YW +64
Milk +21
TM +37

231

RED MEM SUPER VISION 231W

Male MTE 231W February 12 2009 #1508904

RED GLACIER CHATEAU 744 OSF

RED 4L SUPER VISION R2292 OSF (1410274)

RED 4L MR RAMBO R709 OSF

RED RCRA MONARCH

BLACK MEM ANNIE 28J (985325)

BLACK MEM DYNA 83A

AOD	BW	205D	WI	365	YI	ADG	Feb 11
10	82	639	98	1161	89	3.22	1148

2010 EPD's
BW +0.9
WW +28
YW +50
Milk +14
TM +28

235

RED MEM KARWEIK 235W



Male MTE 235W February 12 2009 #Pending

RED NORTHLINE ROB ROY 122K OSF

RED BRYLOR/WSP KARWEIK 1P (1237322)

RED DMM MISS ESSENCE 58M

RED GEFB BEEFMAKER 2101

RED MEM QUEEN 4T (1384807)

RED MEM QUEEN 15G

AOD	BW	205D	WI	365	YI	ADG	Feb 11
2	75	685	107	1264	99	3.41	1166

• **HEIFER BULL**

• We have used Karweik on our heifers for many years

2010 EPD's
BW +1.2
WW +33
YW +58
Milk +17
TM +34

237

RED MEM SUPER VISION 237W



Male MTE 237W February 13 2009 #1508872

RED GLACIER CHATEAU 744 OSF

RED 4L SUPER VISION R2292 OSF (1410274)

RED 4L MR RAMBO R709 OSF

RED MEADOW CK VALUE 16Y

RED MEADOW CK STARLET 51R (1249369)

RED MEADOW CK STARLET 60H

AOD	BW	205D	WI	365	YI	ADG	Feb 11
4	87	602	91	1209	104	3.90	1165

2010 EPD's
BW +1.4
WW +21
YW +40
Milk +18
TM +28

Lot #238



238

RED MEM DOC 238W



Male MTE 238W February 14 2009 #1508906

RED MLK CRK CUB 722 OSF

RED WEBR DOC HOLLIDAY 2N OSF (1238369)

RED WEBR MS DOLLY 1L OSF

RED C&L ACE OF DIAMONDS

RED MEM DAISY 28G (885614)

RED MEM BO DAISY 97C

AOD	BW	205D	WI	365	YI	ADG	Feb 11
12	78	647	100	1277	108	4.06	1221

• Light birth weight out of a hard working cow

2010 EPD's
BW +0.1
WW +32
YW +66
Milk +17
TM +33

Lot #241



241 RED MEM MISSION STATMENT 241W



Male TW MTE 241W February 15 2009 #1508907

RED LJC LANCER 806 OSF

RED LJC MISSION STATEMENT P27 OSF (1318819)

RED LJC HANNAH 106 OSF

RED BRYLOR NEW TREND 22D OSF

RED BLADES MISS NEW TREND 9N (1168442)

RED FLYING K MS HEAVENLY 60F

AOD	BW	205D	WI	365	YI	ADG	Feb 11
6	68	692	100	1301	100	3.78	1275

- Look at the performance on these Mission Statement calves!
- Sell the big steers and keep the heifers!!
- Milk EPD of +29 and Total Maternal of +47... WOW!!

2010	EPD's
BW	+1.4
WW	+37
YW	+75
Milk	+29
TM	+47

242 RED MEM MISSION STATMENT 242W



Male TW MTE 242W February 15 2009 #1508908

RED LJC LANCER 806 OSF

RED LJC MISSION STATEMENT P27 OSF (1318819)

RED LJC HANNAH 106 OSF

RED BRYLOR NEW TREND 22D OSF

RED BLADES MISS NEW TREND 9N (1168442)

RED FLYING K MS HEAVENLY 60F

AOD	BW	205D	WI	365	YI	ADG	Feb 11
6	62	711	100	1330	100	4.02	1306

- Big, thick bull with super numbers

2010	EPD's
BW	+1.4
WW	+37
YW	+75
Milk	+29
TM	+47

245 RED MEM PACKER 245W



Male MTE 245W February 17 2009 #1508911

RED MESSMER JOSHUA 019P OSF

RED MESSMER PACKER S008 OSF (1481359)

RED MESSMER MILLIE 124P OSF

RED BJR RAMBLER 5162 OSF

RED MEM SHAUNA 17M (1133178)

RED LUMONT MISS DYNAMIC 81F

AOD	BW	205D	WI	365	YI	ADG	Feb 11
7	88	666	102	1212	94	3.33	1183

- Here's your chance to buy one of the first Packer sons to sell in Canada
- Out of a Rambler 5162 female

2010	EPD's
BW	+1.3
WW	+35
YW	+65
Milk	+22
TM	+39

246

RED MEM JUDGE 246W



Male MTE 246W February 17 2009 #1508912

RED BECKTON JULIAN GG B571 OSF

RED MESSMER JUDGE 36N OSF (1253637)

RED MESSMER ESTHER 2254 OSF

RED BJR RAMBLER 5162 OSF

RED MEM MINOLA 9P (1236037)

RED MEM MINOLA 24D

AOD	BW	205D	WI	365	YI	ADG	Feb 11
5	93	643	97	1282	109	3.86	1240

- Big, thick bull out of the Minola Family
- Rambler 5162 makes a very productive female and Judge 36N is known for that too

Proj '10 EPD's
BW +0.4
WW +30
YW +56
Milk +14
TM +29

Lot #248



248

RED MEM PACKER 248W



Male MTE 248W February 18 2009 #1508913

RED MESSMER JOSHUA 019P OSF

RED MESSMER PACKER S008 OSF (1481359)

RED MESSMER MILLIE 124P OSF

RED BJR RAMBLER 5162 OSF

RED MEM SPICY 18P (1217663)

RED MEM SKYLAR 13G

AOD	BW	205D	WI	365	YI	ADG	Feb 11
5	90	674	103	1248	98	3.35	1212

- Brother sold last year to McIntyres.
- Good cow whose full sister sold at Red Round-up to Brazil

2010 EPD's
BW +1.3
WW +35
YW +63
Milk +19
TM +37





250

RED MEM DOC 250W

Male MTE 250W February 20 2009 #1508919

RED MLK CRK CUB 722 OSF

RED WEBR DOC HOLLIDAY 2N OSF (1238369)

RED WEBR MS DOLLY 1L OSF

RED GOLD-BAR KING V415 107K

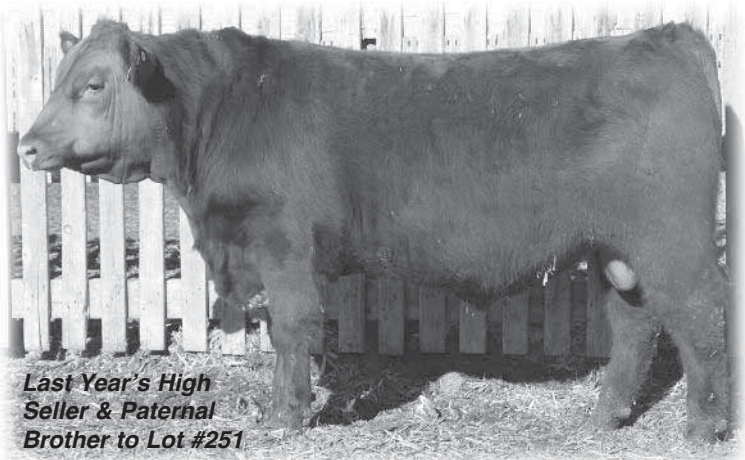
RED MEM COUNTESS 34P (1222284)

RED MEM COUNTESS 6F

AOD	BW	205D	WI	365	YI	ADG	Feb 11
5	84	636	97	1224	101	3.59	1181

• Doc puts a nice butt end and hip on his calves!

2010 EPD's
BW +0.5
WW +32
YW +60
Milk +17
TM +33



*Last Year's High
Seller & Paternal
Brother to Lot #251*

251

RED MEM MUMBO 251W

Male MTE 251W February 20 2009 #1508916

RED YY RED KNIGHT 640F OSF

RED TER-RON MAMBO 28K (1013334)

RED ALDER ABG STAR DUST 8G

RED GLACIER MARIAS 548 OSF

RED MEM HOLLY 36J (963130)

RED HOLLY 3059

AOD	BW	205D	WI	365	YI	ADG	Feb 11
10	59	582	92	1161	99	3.57	1118

• HEIFER BULL

2010 EPD's
BW -1.8
WW +24
YW +49
Milk +16
TM +28

253

RED MEM KARWEIK 253W



Male MTE 253W February 21 2009 #1508878

RED NORTHLINE ROB ROY 122K OSF

RED BRYLOR/WSP KARWEIK 1P (1237322)

RED DMM MISS ESSENCE 58M

RED WINDY HILL LED 423P

RED MEM MONA 35T (1384889)

RED MEM MONA 36L

AOD	BW	205D	WI	365	YI	ADG	Feb 11
2	70	664	105	1175	87	3.25	1064

• HEIFER BULL

2010 EPD's
BW +0.7
WW +29
YW +47
Milk +15
TM +29

258

RED MEM DOC 258W



Male MTE 258W February 21 2009 #1508921

RED MLK CRK CUB 722 OSF

RED WEBR DOC HOLLIDAY 2N OSF (1238369)

RED WEBR MS DOLLY 1L OSF

RED LMB GOLDEN BOY 719 OSF

RED MAC MISS GOLDIE 12L (1071629)

RED GEM FOXY LADY 47F

AOD	BW	205D	WI	365	YI	ADG	Feb 11
8	85	754	118	1394	110	4.18	1350

• This cow does it every year with her high selling in 2006 going to T Bar K and another son to Trevor Virostek

2010 EPD's
BW +1.8
WW +47
YW +87
Milk +23
TM +47

Lot #259



259

RED MEM MUMBO 259W



Male (ET) MTE 259W February 23 2009 #1531572

RED YY RED KNIGHT 640F OSF

RED TER-RON MAMBO 28K (1013334)

RED ALDER ABG STAR DUST 8G

RED COAT

RED MAC PINK COAT 106E (819346)

RED MAC ALEXANDRA 9A

AOD	BW	205D	WI	365	YI	ADG	Feb 11
ET	94	668	100	1220	100	3.43	1175

- **HERD BULL** whose dam we thought enough of to flush and could have 3 sons out of her next year!
- Dam of many herd sires - one is the sire of Lots #272 & #278
- Full sister just calved and is a beautiful female

2010 EPD's
BW +3.3
WW +36
YW +64
Milk +12
TM +30

260

RED MEM DOC 260W



Male MTE 260W February 23 2009 #1508923

RED MLK CRK CUB 722 OSF

RED WEBR DOC HOLLIDAY 2N OSF (1238369)

RED WEBR MS DOLLY 1L OSF

RED BRYLOR NEW TREND 22D OSF

RED T-S COPPER LADY 202L (1128111)

RED CLEAR RIVER SHOUT 78H

AOD	BW	205D	WI	365	YI	ADG	Feb 11
8	88	692	106	1241	94	3.55	1198

- A good Doc Holiday calf with great EPD's
- Sister sold in Red Round-up

2010 EPD's
BW +0.8
WW +36
YW +72
Milk +23
TM +42

261

RED MEM MULBERRY 261W



Male MTE 261W February 23 2009 #1508922

RED COMPASS MULBERRY 449M

RED FINE LINE MULBERRY 26P OSF AMF (1237972)

RED DUS FAYETTE 8G

RED GEIS PRIME RIB 411

RED TR RIBBON 64K (1029406)

RED MEM MISS BO 23H

AOD	BW	205D	WI	365	YI	ADG	Feb 11
9	80	644	99	1194	94	3.27	1147

- Out of a good cow that has produced many high sellers including one to Rodgers Red Angus

2010 EPD's
BW +0.6
WW +40
YW +75
Milk +18
TM +38

265

RED MEM SAKIC 265W



Male MTE 265W February 27 2009 #1508927

RED SIX MILE AVIATOR 217P

RED SIX MILE SAKIC 832S OSF (1332064)

RED SIX MILE SIERA 257P

RED BAKERS CENTURY

RED MEM BAYBERRY 13M (1118544)

RED WIL-SEL BAYBERRY 8J

AOD	BW	205D	WI	365	YI	ADG	Feb 11
7	79	570	87	1162	101	3.63	1100

- HEIFER BULL

2010 EPD's
BW +1.5
WW +32
YW +57
Milk +19
TM +35



Lot #267



267

RED MEM HI HO 267W

Male MTE 267W February 28 2009 #1508933

RED HOLDEN HI HO 574

RED HOLDEN HI HO 7151 OSF (947539)

RED DOUBLE FORK 061C

RED BADLANDS BONUS 702

BLACK MEM TIBBIE 24N (1172467)

REMINGTON'S TIBBIE 118C

AOD	BW	205D	WI	365	YI	ADG	Feb 11
6	89	657	100	1364	121	4.59	1290

- One of the younger bulls, but look at his performance, 4.59 lbs/day
- Good Fargo daughter out of the Tibbie cow family

2010	EPD's
BW	+3.6
WW	+36
YW	+64
Milk	+10
TM	+28

272

RED MEM HAVASU 272W

Male MTE 272W March 06 2009 #1508880

RED LCHMN GRND CANYON 1244G OSC

RED 2D HOOD CANYON 12K (1030604)

RED MAC PINK COAT 106E

RED BRYLOR NEW TREND 22D OSF

RED MEM MINOLA 45R (1287309)

RED MEM MINOLA 24D

AOD	BW	205D	WI	365	YI	ADG	Feb 11
4	91	711	109	1318	104	3.80	1219

- Out of one of our favorite cow families - the Minola family

2010	EPD's
BW	+4.0
WW	+41
YW	+78
Milk	+23
TM	+44

278

RED MEM HAVASU 278W

Male MTE 278W March 08 2009 #1508881

RED LCHMN GRND CANYON 1244G OSC

RED 2D HOOD CANYON 12K (1030604)

RED MAC PINK COAT 106E

RED BRYLOR PHOENIX 16K

RED LAMBS SUE 18R (1257956)

RED LAMBS CHEROK SUE 4K

AOD	BW	205D	WI	365	YI	ADG	Feb 11
4	95	634	95	1271	109	4.02	1166

2010	EPD's
BW	+5.0
WW	+38
YW	+71
Milk	+17
TM	+36

Don Heggie Simmental - Guest Consignor



Don Heggie Simmental

Box 754, Raymond, Alberta

Ph: (403) 752-3894 / Cell: (403) 315-2238

FROM THE HEGGIE FARM, WELCOME TO THE SIMMENTAL PORTION OF THE SALE!

For those who are not familiar with us, we run a small Simmental cow herd east of Raymond, AB. This year we have nine real good bulls in the sale. They are sired by HRD Willie 16R and CMS Safari 645S.



This will be the last year for Willie bull calves as he was sold to John at Old Elm Colony (Magrath, AB). CMS Safari 645S has given us some real good calves the last couple of seasons.

We appreciate and thank Murray Jacobson at Bova Tech in Shaughnessy - he always does a great job feeding our bulls. We thank Mark at Bova Tech for helping us get the bulls ready for the sale.

Busy schedules and weather sometimes prevent you from attending our sale, so if we can be of any help to you, please give us a call on our cell anytime. Thanks to our customers - new & old - for attending our sale! See you March 20th!

Don & Roslynn & Family

Note - Prior to Sale Day, the bulls may be viewed at Bova Tech Livestock (Murray Jacobson's) at Shaughnessy, AB

SALE DAY PHONES:

DON HEGGIE: 403-315-2238 / TODD HEGGIE: 403-715-6237

Reference Sire A



A REFERENCE SIRE

CMS SAFARI 645S

PUREBRED MALE PG664993- CMS 645S 06 February 2006

BW:112 lbs. 205D: 731 lbs 365D:1381 lbs

BBS RED CANADIAN L24

CMS RED POLLED ICON 16P - CA-PG620039

CMS MELODY 03M

ASM MR BAR SAM 212H

CMS LUCY LUI 17L - CA-G561003

WSR HEATHER 20H

We bought Safari from Czech Mate Livestok of Carstairs, AB. Sired by CMS Red Polled Icon 16P (a bull Jim used on heifers as well as cows), Safari throws all the positive attributes that Icon did - calving ease, rib shape, muscling and power!

We sold 1/2 interest in Safari to Remington Cattle Co.

2010 EPD's
CE
2.8
BW
5.9
WW
53.9
YW
89.2
MCE
5.9
MWWT
31.2
Milk
4.2

B REFERENCE
SIRE

HRD WILLIE 16R



PUREBRED MALE PG641917- HRD 16R 03 February 2005

BW:102 lbs. 205D: 882 lbs. 365D:1184 lbs.

NUG RED DOG 7J
DRIFTING "M" BIG DOG 13N - CA-PG611277
 DRIFTING "M" GLORY 6G
 BHL MR EXCALBRE 57J
BHL MISS 57J'S 119L - CA-PG579611
 BHL MISS 3C PASQUE 16G

*Sired by the Drifting "M" Big Dog 13N herd sire that we purchased from Craig & Grant Mills, Willie is a **CALVING EASE BULL** we raised ourselves. He is liver red and long as a freight train!
 We sold Willie 15R to John at Old Elm Colony of Magrth last fall, so this is the last crop of Willie sons we will have on offer.*

2010
EPD's
CE
5.6
BW
5.2
WW
49.1
YW
77.8
MCE
5.6
MWWT
28.8
Milk
4.2

Simmental EPD Explanation

PLEASE NOTE!! THERE IS NO CORRELATION BETWEEN SIMMENTAL EPD'S & RED ANGUS EPD'S!!

The numbers should not be used as a comparison of an animal of one breed to an animal of another breed.

Below is a simplified explanation to help explain how to use the numbers within the Simmental breed.

EPD = Expected Progeny Differences

**HOW TO USE THEM WITHIN THE
 CONTEXT OF THE SIMMENTAL INFORMATION
 PRESENTED IN THIS CATALOGUE**

- CE: Calving Ease** - The higher the value indicates increased calving ease.
- BW: Birth Weight** - Larger value indicates heavier birth weights, lower value indicates lighter birth weight.
- WW: Weaning Weight** - Higher weaning EPD's predict higher weaning weights.
- YW: Yearling Weight** - Higher yearling EPD's indicate greater expected yearling weights.
- MCE: Maternal Calving Ease** - The larger EPD indicates a higher % of unassisted births for calves born out of this sire's daughters.
- MWW: Maternal Weaning Weight** - A larger EPD indicates greater weaning weight for the calves from the daughters of this sire.
- MM: Maternal Milk** - Larger numbers indicate more milking ability of a bull's daughters.

Simmental Breed Average EPD's:

<u>CE</u>	<u>BW</u>	<u>WW</u>	<u>YW</u>	<u>MCE</u>	<u>MWW</u>	<u>Milk</u>
7.8	2.8	36.1	60.3	5.5	25.1	7.0

The Breed Average EPD's are compiled from the total number of Simmental calves registered in 2008 and are the numbers to compare the bulls in this catalogue to.

— KEY TO TERMS USED IN SIMMENTAL SECTION —

- AOD**Age of Dam
- BW**Act. Birth Weight
- 205D**.....205 Day Adj. Wt.
- STW**Start Test Weight - Oct. 3, 2009
- END**End Test Date - January 25, 2010
- ADG**Average Daily Gain On 114 Day Test



7

HRD RED CEASER 7W

PUREBRED MALE SG714871- HRD 7W 14 January 2009

BOZ REDCOAT
ANKONIAN RED CAESAR - CA-PTG670682-
 GFI CANDACE G51
 BHL MR DASH 24H
BHL MISS 24H'S 42L - CA-G579574-
 BHL MISS SKY 47H

PERFORMANCE					
AOD	BW	205D	STW	END	ADG
8	93	767	955	1380	3.73

- Another good bull with Red Dash on the dam's side - she's a hard working, good milking cow that has produced good bulls and heifers for us
- Take a close look - you will like him!!

2010 EPD's
CE
8.1
BW
1.9
WW
31.9
YW
55.2
MCE
4.7
MWWT
23.7
Milk
7.7

LOT 13W



13

HRD WILLY 13W

PUREBRED MALE PG714874- HRD 13W 29 January 2009

DRIFTING "M" BIG DOG 13N
HRD WILLIE 16R - CA-PG641917-
 BHL MISS 57J'S 119L
 WHF RED ROOKIE 160E
HRD SIS' ROOKIE 10M - CA-PTG592071-
 HRD SIS' IMAGE 9D

PERFORMANCE					
AOD	BW	205D	STW	END	ADG
7	96	738	870	1170	2.63

- This bull's pedigree goes a long way back - Galant Sis (JRN 20F) is the first cow that we ever owned - she was a great one!
- Sired by the easy calving bull, Willie 16R
- This bull is cherry red and should throw good calves for you

2010 EPD's
CE
6.7
BW
3.3
WW
41.5
YW
63.3
MCE
5.6
MWWT
23.3
Milk
2.5

Lot 15W



15

HRD WAGER 15W

PUREBRED MALE PG714876- HRD 15W 01 February 2009

CMS RED POLLED ICON 16P

CMS SAFARI 645S - CA-PG664993-

CMS LUCY LUI 17L

ER BIG SKY 545B

BHL MISS SKY'S 18L - CA-G579561-

BHL MISS 24D'S 60J

PERFORMANCE					
AOD	BW	205D	STW	END	ADG
8	92	771	900	1345	3.90

- A long red bull by Safari
- 92 lb. birth weight - should be an easy calver
- His dam, 18L, is a cow I purchased from Darryl Williams - she has a very good calf every year

2010 EPD's
CE
7.7
BW
2.4
WW
37.8
YW
61.5
MCE
5.0
MWWT
28.3
Milk
9.4

Lot 17W



17

HRD SAFARI'S RIGHT TIME 17W

PUREBRED MALE PG714878- HRD 17W 02 February 2009

CMS RED POLLED ICON 16P

CMS SAFARI 645S - CA-PG664993-

CMS LUCY LUI 17L

BH RIGHT TIME 520E

HRD 14N - CA-PG595703-

HRD MS IMAGE 19F

PERFORMANCE					
AOD	BW	205D	STW	END	ADG
6	104	809	955	1400	3.90

- HRD 14N has done it again raising the heaviest bull in the sale!
- In '07 14N's heaviest bull sold to Bryan Mackenzie in share with Mike at East Cardston Colony. Her good '08 heifer calf is retained in our herd; her '09 cherry red, moderate birth wt, wide topped, deep quartered son will add weight to your calves!!

2010 EPD's
CE
5.0
BW
5.5
WW
50.5
YW
84.8
MCE
5.9
MWWT
32.0
Milk
6.7



18

HRD SAFARI 18W

PUREBRED MALE PG714879- HRD 18W 02 February 2009

CMS RED POLLED ICON 16P
CMS SAFARI 645S - CA-PG664993-
 CMS LUCY LUI 17L
 ER RED DASH 649D
BHL MISS DASH'S 84L - CA-PG579588-
 BHL MISS TRAVEL 34G

PERFORMANCE					
AOD	BW	205D	STW	END	ADG
8	103	661	765	1080	2.76

2010 EPD's
CE
2.8
BW
6.2
WW
47.2
YW
79.3
MCE
5.3
MWWT
28.4
Milk
4.8

- A Safari bull that has Red Dash 649D on the dam's side - I love this pedigree!
- A smaller framed bull but thick and red!



23

HRD SWITCHER 23W

PUREBRED MALE PG714881- HRD 23W 08 February 2009

DRIFTING "M" BIG DOG 13N
HRD WILLIE 16R - CA-PG641917-
 BHL MISS 57J'S 119L
 BBS ZIMA D55
HRD MS. ZIMA 2P - CA-PG627803-
 HEGE TIA 3K

PERFORMANCE					
AOD	BW	205D	STW	END	ADG
5	101	640	725	1175	3.95

2010 EPD's
CE
4.4
BW
6.1
WW
49.3
YW
77.5
MCE
5.0
MWWT
27.5
Milk
2.8

- This calf had a terrible start - first off, his mother died, then it took a while to get him placed on another momma cow
- Despite rough beginnings, he's done well and caught right up with his pen mates and will develop into a real good herd sire!

Don Heggie Simmental - Guest Consignor

Lot 24W



24

HRD WAYLON 24W



PUREBRED MALE PG714882- HRD 24W 09 February 2009

CMS RED POLLED ICON 16P

CMS SAFARI 645S - CA-PG664993-

CMS LUCY LUI 17L

ER BIG SKY 545B

BHL MISS SKY'S 17L - CA-PG579560-

BHL MISS 15F'S 20J

PERFORMANCE					
AOD	BW	205D	STW	END	ADG
8	104	760	860	1200	2.98

2010 EPD's
CE
5.6
BW
3.3
WW
36.3
YW
61.7
MCE
5.6
MWWT
26.6
Milk
8.4

- *Thick and stout is how we rate this bull*
- *Coming from a good milking cow, this bull is the one for you if you want to keep some replacement heifers*

Lot 25W



25

HRD HEGGIE FOUR 25W



PUREBRED MALE PG714883- HRD 25W 11 February 2009

DRIFTING "M" BIG DOG 13N

HRD WILLIE 16R - CA-PG641917-

BHL MISS 57J'S 119L

HART RED CHIEF J242

IPU RED POCAHONTAS 46P - CA-PG625976-

TRI G MS AMERICANA 33K

PERFORMANCE					
AOD	BW	205D	STW	END	ADG
5	97	753	845	1200	3.11

2010 EPD's
CE
7.2
BW
3.6
WW
39.7
YW
67.2
MCE
4.1
MWWT
24.3
Milk
4.4

- *Ewelme Colony purchased a brother to this bull in last year's sale*
- *Out of a good cow that my boys bought from LaBatte Simmentals in Saskatchewan*
- *This is a good red bull - he's soggy and powerful!*



35

HRD WONKA 35W

PUREBRED MALE PG714887- HRD 35W 07 March 2009

DRIFTING "M" BIG DOG 13N

HRD WILLIE 16R - CA-PG641917-

BHL MISS 57J'S 119L

WHF RED ROOKIE 160E

HRD MS ROOKIE 11L - CA-PTG563398-

HRD SIS' IMAGE 9D

2010 EPD's
CE
9.3
BW
1.8
WW
39.5
YW
60.1
MCE
6.9
MWWT
22.1
Milk
2.3

PERFORMANCE					
AOD	BW	205D	STW	END	ADG
8	82	699	795	1100	2.68

- A good bull (and brother to 35W) sold in last year's sale to Albert Zoeterman of Fort Macleod
- Rookie 11L has produced some good bulls in her life
- Our only blaze bull in the sale, 35W is young but he is good and with an 82 lb. birth weight, he will calve easy

The Heggie Family.....



".... either it's an occasion, or this family is introducing a whole new look in chore wear for the ranching set!"

From left to right - Jeff's family, Shawn's family, Todd's family and Grandma & Grandpa - Roslynn & Don

World Angus Forum 2009

WAF July 2009



Welcome to Canada

In July 2009 the Angus World converged upon Spruce Meadows for the World Angus Forum and the showcase of Angus cattle, Angus people and the beautiful part of the world we live in.



The Jewel/Don Mackenzie Red Angus Stall



WAF Lot #102 - Red Craig Miss Firefly - Class Winners WAF



Red Jewel Chateau 120T at WAF 2009

Thank You to Our 2009 Buyers!

SINCERE THANKS to all of the bidders and to the following buyers at the 2009 Mackenzie Red Angus / Heggie Simmental Bull Sale!

- * **Barry Allred**
- * **Joe Asuchak**
- * **AZ Farms Ltd.**
- * **John Balderson Farms**
- * **Bar Jay Lazy H Farms**
- * **Bar X Ranch**
- * **Brad Beazer**
- * **Brent Brewin Farms Ltd.**
- * **James Cook**
- * **David Graham**
- * **Dryfork Ranch**
- Ken Gruninger**
- * **Hall Cattle Co. Ltd.**
- Joe & Lee Anne Horvath**
- * **East Cardston Colony**
- * **Ewelme Colony**
- * **Livingstone Colony**
- * **Spring Point Colony**
- * **Thompson Colony**
- * **Tom Lee**
- * **McIntyre Ranching**
- Milk River Bull Club**
- * **Greg Neilson**
- * **Wes Neilson**
- * **E & L Neufeld Farms**
- * **Rafter 56 Ranch**
- * **Tom Riehs**
- * **Riley Ranch Ltd.**
- * **Terry Schierman**
- * **Shoderee Ranch**
- * **Rick Strate**
- Twin Valley Farm & Ranch Inc.**
- * **Trevor Virostek**
- * **Robert Wynder**
- * **Scott Young**

* Repeat Buyer

We most sincerely appreciate your continued support and interest in our cattle.

- Mackenzie Red Angus & Don Heggie Simmental

TERMS & CONDITIONS

TERMS - The terms of the sale are cash or cheque payable at par at Fort Macleod, Alta. The right of property shall not pass until settlement is made. All settlements must be made with the clerks of the sale before any cattle will be released.

BIDS - Every animal entering the sale ring will be sold to the highest bidder. A floor price will apply to each animal consigned.

DISPUTES - In case of disputes, bidding will be reopened between the parties involved. If no further bid is made, the buyer will be the person from whom the auctioneer accepted the last bid. The auctioneer's decision in such matters will be final.

PURCHASER'S RISK - Each animal becomes the risk of the purchaser as soon as sold.

ANNOUNCEMENTS - Errors discovered in the catalogue will be corrected by announcements from the Auction Stand at sale time and such corrections will take precedence over the printed matter in the catalogue.

CERTIFICATE OF REGISTRY - A certificate of registry duly transferred will be furnished to the buyer for each animal after settlement is made.

SHIPPING - Assistance will be given in making shipment after the sale, but no risk is assumed by the Fort Macleod Auction Market Ltd., or the seller. Expenses incurred are the responsibility of the purchaser. Purchasers are requested to furnish shipping instructions when making settlement. Any additional expenses are the responsibility of the buyer, including duty, brokerage fees, etc.

BREEDER'S GUARANTEE - Mackenzie Brothers have done everything possible to assure you, the buyer, that every bull in this sale will be a breeder. A certified veterinarian will have semen tested and physically evaluated every bull. In the unlikely event of a dispute, regular terms & conditions standard with the Canadian Angus Association shall apply.

RETAINED INTERESTS - Mackenzies' Red Angus reserves the right to collect "Owners Use" semen from any bull in this sale at our expense and the buyer's convenience.

ACCIDENTS - Although every precaution will be taken to protect the safety and comfort of buyers, neither the sales manager, auctioneer nor any owner assumes any responsibility in this matter and disclaims any liability, legal or otherwise, in the event of accident or loss of property.

LIABILITY - Fort Macleod Auction Market Ltd. are acting as agents only and assume no responsibility for representations made by the seller. Purchasers must look to the seller for fulfillment of all guarantees and representations made hereunder.

Thank You to all of the Bidders & Buyers and anyone who supported our sale in any way. We appreciate your continued support and interest in our cattle.

The Mackenzie & The Heggie Families