



## **The CACP Story**



In 1999 the Canadian Angus Association created the Canadian Angus Certification Program (CACP). This program is designed to source verify cattle that have at least one registered Angus parent, and promote these cattle in the beef marketplace. Advantages for producers using CACP tags are:

- **Feeder Fax** - A listing service for feeder cattle, updated regularly and available on the CAA website.
- **Replacement Female Listing** - Similar to the Feeder Fax, these listings focus on CACP tagged heifers or cows.
- **Organized CACP Auction Market Sales** - over 60 sales held across Canada annually all advertising CACP tags.
- **Meeting National ID Requirements**



The Canadian Angus Association realized that by selling "Angus" ear tags an opportunity to create a source verified, Angus branded beef product existed. Angus Pride (Cargill) and Butcher Block (Cysco) are working with the Canadian Angus Association to source Angus cattle. Also, Canadian Angus are still using green tags.

*The tag, itself, is lime green, two piece, and tamper-proof. CACP tags qualify under the Canadian Cattle Identification Program.*

### **TO ENROLL CATTLE IN THE CANADIAN ANGUS CERTIFICATION PROGRAM**

1. Ensure registered seed stock have been transferred to your ownership.
2. Contact the Canadian Angus Association (see below) to order tags
3. Tags will be shipped in a timely manner.
4. Complete the program agreement form accompanying the tags and return to the Canadian Angus Association.
5. Tag calves as your management style dictates.

***"If beef is your business...  
Angus is your breed"***

**For More Information on the Canadian Angus Certification Program or to order your "green tags", please contact:**

### **CANADIAN ANGUS ASSOCIATION**

Suite 142, 6715 8 Street N.E., Calgary, Alberta T2E 7H7  
1-888-571-3580 • Visit our website: [www.cdnangus.ca](http://www.cdnangus.ca)



**100**

**RED JEWEL CHATEAU 100W**



Male (ET) JSM 100W January 18 2009 #1536480

RED GLACIER CHATEAU 744 OSF  
**RED PERKS CHATEAU 309R OSF (1291732)**  
 RED PERKS MISS RAMBO 8105 OSF  
 RED MEM GRAND CANYON 203M  
**RED JEWEL PAISLEY 27P (1231791)**  
 RED JEWEL MISS LACEY 64L

AOD	BW	205D	WI	365	YI	ADG	Feb 11
ET	86	700	100	1260	100	3.80	1325

• A big, powerful E.T. calf

2010 EPD's
BW +2.8
WW +40
YW +75
Milk +16
TM +36



**101**

**RED JEWEL CHATEAU 101W**



Male JSM 101W January 21 2009 #1503762

RED GLACIER CHATEAU 744 OSF  
**RED PERKS CHATEAU 309R OSF (1291732)**  
 RED PERKS MISS RAMBO 8105 OSF  
 RED MAC CAP 62F  
**RED JEWEL MISS BARDO 18T (1402243)**  
 RED MAC MISS PATHY 48Z

AOD	BW	205D	WI	365	YI	ADG	Feb 11
2	84	603	92	1225	109	3.77	1159

• Dam is a class winner at the Alberta World Forum Futurity Show

2010 EPD's
BW +3.3
WW +35
YW +65
Milk +11
TM +28



**102**

**RED CRAIG ON FIRE 102W**

Male LCM 102W February 02 2009 #1494871

RED SIX MILE AVIATOR 217P  
**RED SIX MILE SAKIC 832S OSF (1332064)**  
 RED SIX MILE SIERA 257P  
 RED PERKS CHATEAU 309R OSF  
**RED CRAIG MISS FIREFLY 3T (1375103)**  
 RED CRAIG MISS FIREFLY 3R

AOD	BW	205D	WI	365	YI	ADG	Feb 11
2	78	743	118	1366	109	3.57	1292

- **HEIFER BULL - 1/2 Interest Retained**
- He and his mother were class winners at the WAF
- Light birth weight, loads of red meat, very eye appealing!
- **HERD BULL**

2010
<b>EPD's</b>
<b>BW</b>
+1.8
<b>WW</b>
+38
<b>YW</b>
+67
<b>Milk</b>
+19
<b>TM</b>
+37



**103**

**RED JEWEL SAKIC 103W**

Male JSM 103W January 26 2009 #1538541

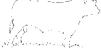
RED SIX MILE AVIATOR 217P  
**RED SIX MILE SAKIC 832S OSF (1332064)**  
 RED SIX MILE SIERA 257P  
 RED BUF CRK HOBO 1961 OSF  
**RED JEWEL MISS CRESTA 6T (1374917)**  
 RED JEWEL PEPPY 15N

AOD	BW	205D	WI	365	YI	ADG	Feb 11
2	69	656	104	1270	107	3.92	1209

- **HEIFER BULL - a Calving Ease Bull**
- All the muscle, thickness and performance as you will find from a two year old dam

Proj '10
<b>EPD's</b>
<b>BW</b>
+0.1
<b>WW</b>
+30
<b>YW</b>
+55
<b>Milk</b>
+23
<b>TM</b>
+38

**105**



**RED MAC CHATEAU 105W**

Male ZDM 105W January 28 2009 #1495637

RED PERKS CHATEAU 309R OSF

**RED JEWEL CHATEAU 120T (1374930)**

RED JEWEL MISS LUCKY LADY 51L

RED MEM GRAND CANYON 203M

**RED MAC MISS DREAMY 9S OSF (1317252)**

RED MAC MISS DREAMY 6N

AOD	BW	205D	WI	365	YI	ADG	Feb 11
3	80	584	92	1123	95	3.69	1098

• HEIFER BULL

2010 EPD's
BW +0.4
WW +29
YW +58
Milk +17
TM +31

**106**



**RED JEWEL CAP 106W**

Male (ET) JSM 106W January 29 2009 #1536110

RED COAT

**RED MAC CAP 62F (852432)**

BLACK MAC MISS ATLAS 3W

RED FCC RAMBO 502 OSF

**RED BROX CRESTA 4B (745414)**

RED BROX BRY LORD 3X

AOD	BW	205D	WI	365	YI	ADG	Feb 11
ET	72	585	100	1141	100	3.47	1153

• HEIFER BULL

• An E.T. calf from an "Elite Dam", Red Brox Cresta 4B

Proj '10 EPD's
BW +1.2
WW +30
YW +53
Milk +15
TM +30

**109**



**RED JEWEL CHATEAU 109W**

Male JSM 109W January 29 2009 #1503770

RED GLACIER CHATEAU 744 OSF

**RED PERKS CHATEAU 309R OSF (1291732)**

RED PERKS MISS RAMBO 8105 OSF

RED SSS POWERSTROKE 245J

**RED JEWEL MISS LILLY 34L (1066017)**

RED JEWEL JUSTINE 91J

AOD	BW	205D	WI	365	YI	ADG	Feb 11
8	74	512	80	1110	106	3.88	1106

• HEIFER BULL

2010 EPD's
BW +0.0
WW +24
YW +48
Milk +8
TM +20



Again this year, as in last year, each Red Angus bull purchased through this sale will receive a \$25.00 coupon to purchase the lime green ear tags that we feel will definitely increase the market value of your calves.

Lot #110



**110**

**RED JEWEL CHATEAU 110W**

Male JSM 110W January 29 2009 #1503771

RED GLACIER CHATEAU 744 OSF

**RED PERKS CHATEAU 309R OSF (1291732)**

RED PERKS MISS RAMBO 8105 OSF

RED MAC CAP 62F

**RED MAC MISS SHOWY 38K (1002769)**

RED MAC MISS FAITH 45F

AOD	BW	205D	WI	365	YI	ADG	Feb 11
9	69	572	92	1119	97	3.35	1130

• HEIFER BULL

2010 EPD's
BW -0.8
WW +25
YW +53
Milk +11
TM +23

Lot #112



**112**

**RED JEWEL SAKIC 112W**

Male JSM 112W February 02 2009 #1503772

RED SIX MILE AVIATOR 217P

**RED SIX MILE SAKIC 832S OSF (1332064)**

RED SIX MILE SIERA 257P

RED BFCK CHEROKEE CNYN 4912 OSF

**RED JEWEL MISS RULER 10T (1374921)**

RED JEWEL MISS RULER 22R

AOD	BW	205D	WI	365	YI	ADG	Feb 11
2	82	651	101	1299	113	3.75	1209

• HEIFER BULL

• A favorite since birth and out of an excellent producing two year old

• HERD BULL

2010 EPD's
BW +1.7
WW +40
YW +69
Milk +25
TM +45

114



**RED JEWEL CHATEAU 114W**

Male JSM 114W February 04 2009 #1503773

RED GLACIER CHATEAU 744 OSF

**RED PERKS CHATEAU 309R OSF (1291732)**

RED PERKS MISS RAMBO 8105 OSF

RED JR HOLDEN SPOTLIGHT 143

**RED JEWEL CRESTA 4R (1288978)**

RED BROX CRESTA 4B

AOD	BW	205D	WI	365	YI	ADG	Feb 11
4	72	619	100	1072	80	2.90	1070

• HEIFER BULL

2010 EPD's
BW -2.0
WW +26
YW +55
Milk +17
TM +30

115



**RED MAC PACKER 115W**

Male ZDM 115W February 03 2009 #1495638

RED MESSMER JOSHUA 019P OSF

**RED MESSMER PACKER S008 OSF (1481359)**

RED MESSMER MILLIE 124P OSF

RED RD DREAMMAKER OF 3R

**RED MAC MISS DREAMY 6N (1167127)**

RED MAC MISS CREST 75W

AOD	BW	205D	WI	365	YI	ADG	Feb 11
6	96	686	108	1161	84	2.78	1180

- Mother always produces the top selling bulls
- Dam is a great consistent producer
- East Cardston Colony bought her 2008 bull

2010 EPD's
BW +2.1
WW +36
YW +70
Milk +22
TM +41

116



**RED MAC CHATEAU 116W**

Male ZDM 116W February 5 2009 #1495641

RED PERKS CHATEAU 309R OSF

**RED JEWEL CHATEAU 120T (1374930)**

RED JEWEL MISS LUCKY LADY 51L

RED LCHMN GRND CANYON 1244G OSC

**RED MAC MISS ROSEBUD 23S OSF (1317248)**

RED MAC MISS SHOWY 93K

AOD	BW	205D	WI	365	YI	ADG	Feb 11
3	85	653	104	1218	100	3.67	1178

• HEIFER BULL

2010 EPD's
BW +1.6
WW +34
YW +646
Milk +17
TM +34



**TURNING  
INFORMATION INTO  
KNOWLEDGE**

**A Big THANK YOU to  
Kevin Hiemstra,  
Paul Christiansen, and  
Steve Brander -**

**PFIZER ANIMAL HEALTH**

**for their  
contribution for our 2010  
Buyers Draw**

Lot #119



**119**

**RED JEWEL JACKPOT 119W**

Male JSM 119W February 11 2009 #1503776

RED KLC JACKPOT 48M

**RED ROD JACKPOT 138R (1288190)**

RED ROD HB YANKE 638G

RED BRYLOR MASTER PLAN 17M

**RED RED-ROCK COPPER QUEEN 255P (1205242)**

RED RED-ROCK COPPER QUEEN 256M

AOD	BW	205D	WI	365	YI	ADG	Feb 11
5	83	670	107	1358	121	4.94	1336

- If you sell cattle by the pound, you will love 119W
- **HERD BULL**

2010 EPD's
<b>BW</b>
+0.5
<b>WW</b>
+34
<b>YW</b>
+68
<b>Milk</b>
+17
<b>TM</b>
+34

**122**

**RED JEWEL JACKPOT 122W**

Male JSM 122W February 12 2009 #1503778

RED KLC JACKPOT 48M

**RED ROD JACKPOT 138R (1288190)**

RED ROD HB YANKE 638G

RED BJR RAMBLER 5162 OSF

**RED JEWEL MCKAYLA 7M (1116487)**

RED MAC MISS SHOWY 111K

AOD	BW	205D	WI	365	YI	ADG	Feb 11
7	81	572	90	1098	93	3.78	1083

- **HEIFER BULL**

2010 EPD's
<b>BW</b>
-0.2
<b>WW</b>
+28
<b>YW</b>
+51
<b>Milk</b>
+15
<b>TM</b>
+29

**123**

**RED JEWEL CHATEAU 123W**

Male JSM 123W February 12 2009 #1503780

RED GLACIER CHATEAU 744 OSF

**RED PERKS CHATEAU 309R OSF (1291732)**

RED PERKS MISS RAMBO 8105 OSF

RED PERKS ADVANCE 121R

**RED JEWEL MISS ATLAS 10R (1258506)**

RED JEWEL JESSIE 46J

AOD	BW	205D	WI	365	YI	ADG	Feb 11
4	91	594	92	1169	102	3.47	1123

2010 EPD's
<b>BW</b>
+3.4
<b>WW</b>
+32
<b>YW</b>
+62
<b>Milk</b>
+9
<b>TM</b>
+25



**127**

**RED MAC MASTERPLAN 127W**

Male ZDM 127W February 15 2009 #1495642

RED BRYLOR MASTER PLAN 17M

**RED RINGSTEAD MASTER PLAN 183P (1233184)**

RED 77 LORRAINE 17H

RED BIG SKY MAF STATEMENT 199

**RED MAC MISS PEPPY 13N (1167137)**

RED MAC MISS SHOWY 93K

AOD	BW	205D	WI	365	YI	ADG	Feb 11
6	87	644	102	1215	101	3.96	1192

- High producing dam has explosive EPD's in a moderate, eye appealing package
- Sold 2007 bull to Willow Creek Colony

2010 EPD's
BW +1.8
WW +32
YW +65
Milk +18
TM +34

**130**

**RED MAC JACKPOT 130W**

Male ZDM 130W February 17 2009 #1495643

RED KLC JACKPOT 48M

**RED ROD JACKPOT 138R (1288190)**

RED ROD HB YANKE 638G

RED BJR RAMBLER 5162 OSF

**RED MAC MISS RAMBLER 13L (1048500)**

MAC MISS PATHY 24A

AOD	BW	205D	WI	365	YI	ADG	Feb 11
8	86	630	99	1214	103	3.61	1177

2010 EPD's
BW +1.1
WW +31
YW +60
Milk +18
TM +33

**131**

**RED JEWEL CHATEAU 131W**

Male JSM 131W February 17 2009 #1503786

RED PERKS CHATEAU 309R OSF

**RED JEWEL CHATEAU 120T (1374930)**

RED JEWEL MISS LUCKY LADY 51L

RED BJR RAMBLER 5162 OSF

**RED JEWEL BARDO 19S (1363406)**

RED MAC MISS PATHY 48Z

AOD	BW	205D	WI	365	YI	ADG	Feb 11
3	81	584	92	1183	106	3.71	1100

• HEIFER BULL

2010 EPD's
BW +0.9
WW +28
YW +54
Milk +13
TM +27

132

**RED JEWEL JACKPOT 132W**

Male JSM 132W February 18 2009 #1503787

RED KLC JACKPOT 48M

**RED ROD JACKPOT 138R (1288190)**

RED ROD HB YANKE 638G

RED MAC CAP 62F

**RED JEWEL MISS LADY BUG 42L (1050523)**

RED BROX CRESTA 4B

AOD	BW	205D	WI	365	YI	ADG	Feb 11
8	84	576	90	1097	92	3.22	1062

• HEIFER BULL

2010 EPD's
BW +1.0
WW +31
YW +59
Milk +18
TM +33

133

**RED GEM MASTERPLAN 133W**

Male AAM 133W February 18 2009 #1495650

RED BRYLOR MASTER PLAN 17M

**RED RINGSTEAD MASTER PLAN 183P (1233184)**

RED 77 LORRAINE 17H

RED MAC TAILOR MADE 7J

**RED GEM MADDIE 5M (1116379)**

RED GEM ELLIE 79E

AOD	BW	205D	WI	365	YI	ADG	Feb 11
7	82	567	89	1100	94	3.37	1064

• HEIFER BULL

2010 EPD's
BW +4.3
WW +39
YW +73
Milk +10
TM +29

Lot #135



135

**RED JEWEL MASTERPLAN 135W**

Male JSM 135W February 25 2009 #1503792

RED BRYLOR MASTER PLAN 17M

**RED RINGSTEAD MASTER PLAN 183P (1233184)**

RED 77 LORRAINE 17H

RED MLK CRK CUB 722 OSF

**RED JEWEL KITTEN 4P (1231769)**

RED JEWEL MOCHA 9M

AOD	BW	205D	WI	365	YI	ADG	Feb 11
5	81	694	112	1325	111	3.80	1261

- HEIFER BULL with pedigree, performance & eye appeal!
- Will look super on anyone's pasture and work well on heifers or cows
- HERD BULL

2010 EPD's
BW +1.3
WW +40
YW +76
Milk +18
TM +38

**137**

**RED CRAIG JACKPOT 137W**

Male LCM 137W February 27 2009 #1494872

RED KLC JACKPOT 48M

**RED ROD JACKPOT 138R (1288190)**

RED ROD HB YANKE 638G

RED CRCC BLAZE'N THROUGH 888G

**RED MAC MISS BLAZE 33L (1048484)**

BLACK MAC MISS ATLAS 3W

AOD	BW	205D	WI	365	YI	ADG	Feb 11
8	79	627	100	1178	97	3.76	1123

• HEIFER BULL

2010 EPD's
BW +1.3
WW +31
YW +61
Milk +20
TM +35

**138**

**RED JEWEL MASTERPLAN 138W**

Male JSM 138W February 27 2009 #1503794

RED BRYLOR MASTER PLAN 17M

**RED RINGSTEAD MASTER PLAN 183P (1233184)**

RED 77 LORRAINE 17H

RED MAC CAP 62F

**RED JEWEL KANDY 98K (1007982)**

RED JEWEL MISS RULER 17A

AOD	BW	205D	WI	365	YI	ADG	Feb 11
9	94	661	104	1234	101	4.02	1178

• Extremely impressive individual, powerful and long hiped, correct and attractive!

2010 EPD's
BW +3.5
WW +40
YW +75
Milk +16
TM +36

Lot #139



**139**

**RED MAC JACKPOT 139W**

Male ZDM 139W March 01 2009 #1495644

RED KLC JACKPOT 48M

**RED ROD JACKPOT 138R (1288190)**

RED ROD HB YANKE 638G

RED LMB GOLDEN BOY 719 OSF

**RED MAC MISS GOLDY 20N (1167130)**

RED GEM FOXY LADY 47F

AOD	BW	205D	WI	365	YI	ADG	Feb 11
6	91	642	101	1284	113	4.06	1209

• A bull that will add pounds to your calves!  
• Check him out on Sale Day!!

2010 EPD's
BW +3/1
WW +42
YW +73
Milk +18
TM +39

140

**RED JEWEL MASTERPLAN 140W**

Male JSM 140W March 02 2009 #1503795

RED BRYLOR MASTER PLAN 17M  
**RED RINGSTEAD MASTER PLAN 183P (1233184)**  
 RED 77 LORRAINE 17H  
 RED FORSTER DURANGO 7009ET  
**RED DKF MISS DURANGO 65M (1109639)**  
 RED DKF SALLY 5Y

AOD	BW	205D	WI	365	YI	ADG	Feb 11
7	100	645	100	1313	118	4.29	1232

- Mother was Junior Champion Female at Agribition 2003
- She has two sons working at Selmar & Marty Peterson's Ranch and a son at Pinhorn Grazing Association

2010 EPD's
BW +5.9
WW +43
YW +76
Milk +12
TM +33

141

**RED JEWEL JACKPOT 141W**

Male JSM 141W March 03 2009 #1503796

RED KLC JACKPOT 48M  
**RED ROD JACKPOT 138R (1288190)**  
 RED ROD HB YANKE 638G  
 RED LCHMN GRND CANYON 1244G OSC  
**RED JEWEL PARIS 9P OSF (1231771)**  
 RED MAC MISS CHEROK 14F

AOD	BW	205D	WI	365	YI	ADG	Feb 11
5	74	722	118	1310	104	3.55	1234

- **HEIFER BULL** with tremendous volume & capacity
- **HERD BULL**

2010 EPD's
BW -0.2
WW +40
YW +79
Milk +23
TM +43

142

**RED MAC MASTERPLAN 142W**

Male ZDM 142W March 03 2009 #1495645

RED BRYLOR MASTER PLAN 17M  
**RED RINGSTEAD MASTER PLAN 183P (1233184)**  
 RED 77 LORRAINE 17H  
 RED FCC RAMBO 502 OSF  
**RED MAC MS RAMPAGE 22L (1175382)**  
 RED BJR TIDY BEE 677-6186

AOD	BW	205D	WI	365	YI	ADG	Feb 11
8	100	707	111	1329	110	3.98	1252

- **HERD BULL**
- A bull with added thickness and volume that will work well on cows

2010 EPD's
BW +4.4
WW +44
YW +76
Milk +15
TM +37

144

**RED MAC MASTERPLAN 144W**

Male ZDM 144W March 08 2009 #1495648

RED BRYLOR MASTER PLAN 17M  
**RED RINGSTEAD MASTER PLAN 183P (1233184)**  
 RED 77 LORRAINE 17H  
 RED MAC CAP 62F  
**RED MAC MISS SHOWY 93K (1002745)**  
 RED HEAD ROSEBUD 27E

AOD	BW	205D	WI	365	YI	ADG	Feb 11
9	82	717	116	1224	89	2.88	1141

- The Rosebud cow family are foundation producing females
- They have always made me money!

2010 EPD's
BW +1.0
WW +39
YW +77
Milk +16
TM +35

Lot #145



**145**

**RED JEWEL JACKPOT 145W**

Male JSM 145W March 12 2009 #1503797

RED KLC JACKPOT 48M

**RED ROD JACKPOT 138R (1288190)**

RED ROD HB YANKE 638G

RED LCHMN GRND CANYON 1244G OSC

**RED JEWEL PINA COLODA 10P OSF (1231772)**

RED JEWEL MISS LADY BUG 42L

AOD	BW	205D	WI	365	YI	ADG	Feb 11
5	82	694	112	1245	97	3.39	1148

• His dam was the calf at side of the Grand Champion Female - Lethbridge Gold Show 2004

2010
<b>EPD's</b>
<b>BW</b>
+0.5
<b>WW</b>
+40
<b>YW</b>
+77
<b>Milk</b>
+22
<b>TM</b>
+42

Lot #201



**201**

**RED MEM SUPER VISION 201W**

Male MTE 201W January 26 2009 #1508885

RED GLACIER CHATEAU 744 OSF

**RED 4L SUPER VISION R2292 OSF (1410274)**

RED 4L MR RAMBO R709 OSF

RED TASSEL CHIVALRY 1G OSF

**RED ALLAVON LARKABA 3N (1186043)**

RED ALLAVON LARKABA 8L

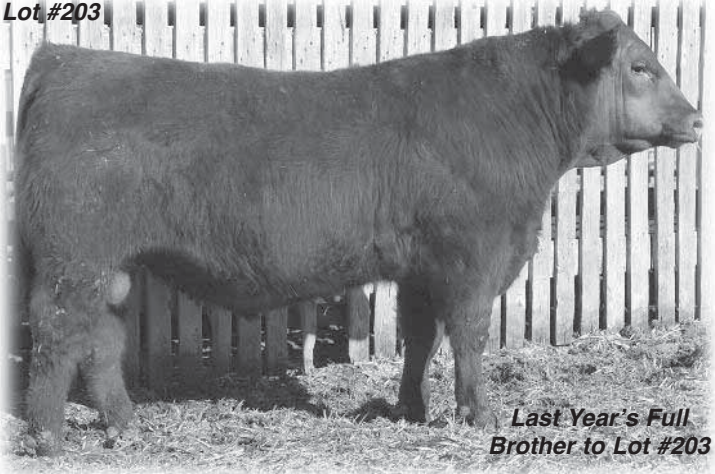
AOD	BW	205D	WI	365	YI	ADG	Feb 11
6	86	707	109	1414	121	4.47	1438

• Heaviest bull to start test; heaviest bull at end of test with almost a 4 1/2 lb. gain!  
 • If you want to add pounds at selling time while retaining his heifers - this is that kind of bull! • **HERD BULL**

2010
<b>EPD's</b>
<b>BW</b>
+1.9
<b>WW</b>
+34
<b>YW</b>
+60
<b>Milk</b>
+19
<b>TM</b>
+36

**Mackenzie Red Angus Bull Sale - March 20, 2010**

Lot #203



**203**

**RED MEM DOC 203W**

Male MTE 203W January 29 2009 #1508886

RED MLK CRK CUB 722 OSF

**RED WEBR DOC HOLLIDAY 2N OSF (1238369)**

RED WEBR MS DOLLY 1L OSF

RED BADLANDS BONUS 702

**RED MEM LARKABELLE 20L (1065169)**

RED MEM LARKABELLE 10J

AOD	BW	205D	WI	365	YI	ADG	Feb 11
8	72	652	102	1218	96	3.75	1245

• Light birth weight with lots of performance

2010 EPD's
BW -0.7
WW +33
YW +63
Milk +21
TM +38

**204**

**RED MEM DOC 204W**

Male MTE 204W January 29 2009 Not Registered

RED MLK CRK CUB 722 OSF

**RED WEBR DOC HOLLIDAY 2N OSF (1238369)**

RED WEBR MS DOLLY 1L OSF

RED BADLANDS BONUS 702

**RED MEM INATEXXI 38P (1309979)**

RED SOUTHOLM INATEXXI 30D

AOD	BW	205D	WI	365	YI	ADG	Feb 11
3	87	650	99	1214	96	3.86	1240

2010 EPD's
BW +1.9
WW +35
YW +61
Milk +17
TM +35

**207**

**RED MEM DOC 207W**

Male MTE 207W February 02 2009 #1508858

RED MLK CRK CUB 722 OSF

**RED WEBR DOC HOLLIDAY 2N OSF (1238369)**

RED WEBR MS DOLLY 1L OSF

RED HOLDEN HI HO 7151 OSF

**RED MEM HI STORM 31S (1330970)**

RED MEM MISS FARGO 41N

AOD	BW	205D	WI	365	YI	ADG	Feb 11
3	76	692	108	1240	94	3.61	1219

• Light birth weight, good performance and great hair coat

2010 EPD's
BW +0.6
WW +41
YW +73
Milk +16
TM +37

**209**

**RED MEM PACKER 209W**

Male MTE 209W February 03 2009 #1508860

RED MESSMER JOSHUA 019P OSF  
**RED MESSMER PACKER S008 OSF (1481359)**  
 RED MESSMER MILLIE 124P OSF  
 RED SOUTH VIEW NO EQUAL 28H  
**RED JAS LASSIE 16R (1269783)**  
 RED GIRVINMERE LASSIE 30J

AOD	BW	205D	WI	365	YI	ADG	Feb 11
4	70	601	93	1144	93	3.47	1133

• HEIFER BULL

2010 EPD's
BW -1.4
WW +29
YW +52
Milk +13
TM +28

Lot #213



**213**

**RED MEM MULBERRY 213W**

Male MTE 213W February 05 2009 #1508862

RED COMPASS MULBERRY 449M  
**RED FINE LINE MULBERRY 26P OSF AMF (1237972)**  
 RED DUS FAYETTE 8G  
 RED BAR-E-L APPROVAL 4L  
**RED PIRO MARTA 507R (1263566)**  
 RED ALALTA DYNAMIC MARTA 53D

AOD	BW	205D	WI	365	YI	ADG	Feb 11
4	83	642	98	1285	110	3.98	1260

• HERD BULL

• Complete package, nice birth weight, good mother, great performance, muscle and style!

2010 EPD's
BW +1.9
WW +39
YW +72
Milk +16
TM +35

**214**

**RED MEM PACKER 214W**

Male MTE 214W February 07 2009 #1508864

RED MESSMER JOSHUA 019P OSF  
**RED MESSMER PACKER S008 OSF (1481359)**  
 RED MESSMER MILLIE 124P OSF  
 RED BJR AH BRANDED BEEF L107 OSF  
**RED MEM OAKLEAF 6S (1366966)**  
 RED BRYLOR OAKLEAF 49D

AOD	BW	205D	WI	365	YI	ADG	Feb 11
3	85	611	92	1192	99	3.57	1140

2010 EPD's
BW +2.0
WW +37
YW +64
Milk +14
TM +32

**215 RED MEM MISSION STATEMENT 215W**



Male MTE 215W February 07 2009 #1508866

RED LJC LANCER 806 OSF  
**RED LJC MISSION STATEMENT P27 OSF (1318819)**  
 RED LJC HANNAH 106 OSF  
 RED TR TRAIL BLAZER 81M  
**RED MEM COUNTESS 54T (1384821)**  
 RED MEM COUNTESS 19K

AOD	BW	205D	WI	365	YI	ADG	Feb 11
2	72	686	108	1331	110	4.14	1244

• **HEIFER BULL** that will put some pounds on his calves at selling time!

2010 <b>EPD's</b>
<b>BW</b> -1.0
<b>WW</b> +33
<b>YW</b> +69
<b>Milk</b> +24
<b>TM</b> +41

**216 RED MEM JUDGE 216W**



Male MTE 216W February 07 2009 #1508863

RED BECKTON JULIAN GG B571 OSF  
**RED MESSMER JUDGE 36N OSF (1253637)**  
 RED MESSMER ESTHER 2254 OSF  
 RED BJR AH BRANDED BEEF L107 OSF  
**RED MEM COUNTESS 8R (1287337)**  
 RED MEM COUNTESS 19K

AOD	BW	205D	WI	365	YI	ADG	Feb 11
4	73	615	95	1169	95	3.41	1146

• **HEIFER BULL**

2010 <b>EPD's</b>
<b>BW</b> -1.3
<b>WW</b> +27
<b>YW</b> +54
<b>Milk</b> +13
<b>TM</b> +26

**217 RED MEM SUPER VISION 217W**



Male MTE 217W February 8 2009 #Pending

RED GLACIER CHATEAU 744 OSF  
**RED 4L SUPER VISION R2292 OSF (1410274)**  
 RED 4L MR RAMBO R709 OSF  
 RED BRYLOR ICON 11H  
**RED MEM INATEX 31L (1053711)**  
 RED MEM INATEX 18H

AOD	BW	205D	WI	365	YI	ADG	Feb 11
8	69	641	100	1234	100	3.41	1222

2010 <b>EPD's</b>
<b>BW</b> +1.9
<b>WW</b> +30
<b>YW</b> +58
<b>Milk</b> +19
<b>TM</b> +33

**218 RED MEM SUPER VISION 218W**



Male MTE 218W February 8 2009 #Pending

RED GLACIER CHATEAU 744 OSF  
**RED 4L SUPER VISION R2292 OSF (1410274)**  
 RED 4L MR RAMBO R709 OSF  
 RED BRYLOR ICON 11H  
**RED MEM INATEX 31L (1053711)**  
 RED MEM INATEX 18H

AOD	BW	205D	WI	365	YI	ADG	Feb 11
8	65	704	100	1253	100	3.70	1260

• *Super Vision is making tremendous females that are highly productive and sons that have great performance*

2010 <b>EPD's</b>
<b>BW</b> +1.9
<b>WW</b> +30
<b>YW</b> +58
<b>Milk</b> +19
<b>TM</b> +33

**219**

**RED MEM DOC 219W**



Male MTE 219W February 09 2009 #1508896

RED MLK CRK CUB 722 OSF

**RED WEBR DOC HOLLIDAY 2N OSF (1238369)**

RED WEBR MS DOLLY 1L OSF

RED ALBERN EDGE 34'98

**RED MOOSE CREEK LANA 107K (1018280)**

RED BRAMSHOTT LANA 483F

AOD	BW	205D	WI	365	YI	ADG	Feb 11
9	76	626	97	1083	78	2.67	1083

• **HEIFER BULL**

2010 EPD's
BW -1.0
WW +35
YW +63
Milk +16
TM +34

**224**

**RED MEM DOC 224W**



Male MTE 224W February 10 2009 #1508868

RED MLK CRK CUB 722 OSF

**RED WEBR DOC HOLLIDAY 2N OSF (1238369)**

RED WEBR MS DOLLY 1L OSF

RED BASIN SENSATION 702E OSF

**RED MEM COUNTESS 21R (1287359)**

RED MEM COUNTESS 16N

AOD	BW	205D	WI	365	YI	ADG	Feb 11
4	78	654	101	1113	78	2.86	1097

• **HEIFER BULL**

• We A.I.'ed Doc Holiday to cows and heifers last year and haven't touched any of them

2010 EPD's
BW -1.0
WW +34
YW +65
Milk +17
TM +34

**225**

**RED MEM MULBERRY 225W**



Male MTE 225W February 10 2009 #1508897

RED COMPASS MULBERRY 449M

**RED FINE LINE MULBERRY 26P OSF AMF (1237972)**

RED DUS FAYETTE 8G

RED KBJ SAM'S PROSPECTOR 133Z

**RED JALORMI T GOLDETTE 62E (815142)**

RED TRENTIN GOLDETTE 17Z

AOD	BW	205D	WI	365	YI	ADG	Feb 11
14	78	706	110	1273	97	3.55	1238

• This calf's mother has been around for a reason - she always produces a good one!

2010 EPD's
BW -0.7
WW +34
YW +65
Milk +22
TM +39



Again this year, as in last year, each Red Angus bull purchased through this sale will receive a \$25.00 coupon to purchase the lime green ear tags that we feel will definitely increase the market value of your calves.

Lot #226



**226 RED MEM MISSION STATEMENT 226W**



Male MTE 226W February 11 2009 #1508903

RED LJC LANCER 806 OSF

**RED LJC MISSION STATEMENT P27 OSF (1318819)**

RED LJC HANNAH 106 OSF

RED BJR MAKE MY DAY 981 OSF

**RED PIRO COCOA 403P (1212457)**

RED PIRO COCOA 229M

AOD	BW	205D	WI	365	YI	ADG	Feb 11
5	74	636	99	1371	126	4.37	1335

• **HERD BULL** with a 74 lb. birth weight and 4.37 lbs. gain - this guy is a meat machine!

2010 <b>EPD's</b>
<b>BW</b> -1.7
<b>WW</b> +30
<b>YW</b> +66
<b>Milk</b> +24
<b>TM</b> +38

**227 RED MEM PACKER 227W**



Male MTE 227W February 11 2009 #1508899

RED MESSMER JOSHUA 019P OSF

**RED MESSMER PACKER S008 OSF (1481359)**

RED MESSMER MILLIE 124P OSF

RED RD DIVIDEND 7F

**RED MEM INATEXXI 8K (1005683)**

RED SOUTHOLM INATEXXI 30D

AOD	BW	205D	WI	365	YI	ADG	Feb 11
9	80	682	106	1316	108	3.78	1295

• I think you are going to like the style and muscle in these Packer calves  
• **HERD BULL**

2010 <b>EPD's</b>
<b>BW</b> -0.2
<b>WW</b> +30
<b>YW</b> +56
<b>Milk</b> +18
<b>TM</b> +33

**228 RED MEM DOC 228W**



Male MTE 228W February 11 2009 #1508871

RED MLK CRK CUB 722 OSF

**RED WEBR DOC HOLLIDAY 2N OSF (1238369)**

RED WEBR MS DOLLY 1L OSF

RED MR. AMBER'S JACKPOT 3M

**RED MEM FAYET 48R (1309974)**

RED BAR THREE H FAYET 4H

AOD	BW	205D	WI	365	YI	ADG	Feb 11
4	79	592	90	1148	95	3.29	1110

• **HEIFER BULL**

2010 <b>EPD's</b>
<b>BW</b> +0.4
<b>WW</b> +30
<b>YW</b> +56
<b>Milk</b> +14
<b>TM</b> +29



**229**

**RED MEM PACKER 229W**

Male MTE 229W February 11 2009 #1508902

RED MESSMER JOSHUA 019P OSF

**RED MESSMER PACKER S008 OSF (1481359)**

RED MESSMER MILLIE 124P OSF

RED BAKERS CENTURY

**RED MEM OAKLEAF 41M (1129245)**

RED MEM OAKLEAF 3F

AOD	BW	205D	WI	365	YI	ADG	Feb 11
7	79	682	106	1316	108	4.02	1298

- **HERD BULL** that's looked great since birth
- He has the numbers and performance to tie it all together!

2010 <b>EPD's</b>
<b>BW</b> +0.6
<b>WW</b> +34
<b>YW</b> +62
<b>Milk</b> +22
<b>TM</b> +38

**230**

**RED MEM MULBERRY 230W**

Male MTE 230W February 11 2009 #1508901

RED COMPASS MULBERRY 449M

**RED FINE LINE MULBERRY 26P OSF AMF (1237972)**

RED DUS FAYETTE 8G

RED OARLOCK JADE 6J

**RED JENSEN MISS BOOTY 43L (1066313)**

RED H70 QUANTOCK 61 MISS 242C

AOD	BW	205D	WI	365	YI	ADG	Feb 11
8	90	596	89	1186	101	3.63	1163

2010 <b>EPD's</b>
<b>BW</b> +1.4
<b>WW</b> +33
<b>YW</b> +64
<b>Milk</b> +21
<b>TM</b> +37

**231**

**RED MEM SUPER VISION 231W**

Male MTE 231W February 12 2009 #1508904

RED GLACIER CHATEAU 744 OSF

**RED 4L SUPER VISION R2292 OSF (1410274)**

RED 4L MR RAMBO R709 OSF

RED RCRA MONARCH

**BLACK MEM ANNIE 28J (985325)**

BLACK MEM DYNA 83A

AOD	BW	205D	WI	365	YI	ADG	Feb 11
10	82	639	98	1161	89	3.22	1148

2010 <b>EPD's</b>
<b>BW</b> +0.9
<b>WW</b> +28
<b>YW</b> +50
<b>Milk</b> +14
<b>TM</b> +28

**235**

**RED MEM KARWEIK 235W**



Male MTE 235W February 12 2009 #Pending

RED NORTHLINE ROB ROY 122K OSF

**RED BRYLOR/WSP KARWEIK 1P (1237322)**

RED DMM MISS ESSENCE 58M

RED GEFB BEEFMAKER 2101

**RED MEM QUEEN 4T (1384807)**

RED MEM QUEEN 15G

AOD	BW	205D	WI	365	YI	ADG	Feb 11
2	75	685	107	1264	99	3.41	1166

• **HEIFER BULL**

• We have used Karweik on our heifers for many years

2010 <b>EPD's</b>
<b>BW</b> +1.2
<b>WW</b> +33
<b>YW</b> +58
<b>Milk</b> +17
<b>TM</b> +34

**237**

**RED MEM SUPER VISION 237W**



Male MTE 237W February 13 2009 #1508872

RED GLACIER CHATEAU 744 OSF

**RED 4L SUPER VISION R2292 OSF (1410274)**

RED 4L MR RAMBO R709 OSF

RED MEADOW CK VALUE 16Y

**RED MEADOW CK STARLET 51R (1249369)**

RED MEADOW CK STARLET 60H

AOD	BW	205D	WI	365	YI	ADG	Feb 11
4	87	602	91	1209	104	3.90	1165

2010 <b>EPD's</b>
<b>BW</b> +1.4
<b>WW</b> +21
<b>YW</b> +40
<b>Milk</b> +18
<b>TM</b> +28

**Lot #238**



**238**

**RED MEM DOC 238W**



Male MTE 238W February 14 2009 #1508906

RED MLK CRK CUB 722 OSF

**RED WEBR DOC HOLLIDAY 2N OSF (1238369)**

RED WEBR MS DOLLY 1L OSF

RED C&L ACE OF DIAMONDS

**RED MEM DAISY 28G (885614)**

RED MEM BO DAISY 97C

AOD	BW	205D	WI	365	YI	ADG	Feb 11
12	78	647	100	1277	108	4.06	1221

• Light birth weight out of a hard working cow

2010 <b>EPD's</b>
<b>BW</b> +0.1
<b>WW</b> +32
<b>YW</b> +66
<b>Milk</b> +17
<b>TM</b> +33

Lot #241



## 241 RED MEM MISSION STATMENT 241W



Male TW MTE 241W February 15 2009 #1508907

RED LJC LANCER 806 OSF

**RED LJC MISSION STATEMENT P27 OSF (1318819)**

RED LJC HANNAH 106 OSF

RED BRYLOR NEW TREND 22D OSF

**RED BLADES MISS NEW TREND 9N (1168442)**

RED FLYING K MS HEAVENLY 60F

AOD	BW	205D	WI	365	YI	ADG	Feb 11
6	68	692	100	1301	100	3.78	1275

- Look at the performance on these Mission Statement calves!
- Sell the big steers and keep the heifers!!
- Milk EPD of +29 and Total Maternal of +47... WOW!!

2010	EPD's
BW	+1.4
WW	+37
YW	+75
Milk	+29
TM	+47

## 242 RED MEM MISSION STATMENT 242W



Male TW MTE 242W February 15 2009 #1508908

RED LJC LANCER 806 OSF

**RED LJC MISSION STATEMENT P27 OSF (1318819)**

RED LJC HANNAH 106 OSF

RED BRYLOR NEW TREND 22D OSF

**RED BLADES MISS NEW TREND 9N (1168442)**

RED FLYING K MS HEAVENLY 60F

AOD	BW	205D	WI	365	YI	ADG	Feb 11
6	62	711	100	1330	100	4.02	1306

- Big, thick bull with super numbers

2010	EPD's
BW	+1.4
WW	+37
YW	+75
Milk	+29
TM	+47

## 245 RED MEM PACKER 245W



Male MTE 245W February 17 2009 #1508911

RED MESSMER JOSHUA 019P OSF

**RED MESSMER PACKER S008 OSF (1481359)**

RED MESSMER MILLIE 124P OSF

RED BJR RAMBLER 5162 OSF

**RED MEM SHAUNA 17M (1133178)**

RED LUMONT MISS DYNAMIC 81F

AOD	BW	205D	WI	365	YI	ADG	Feb 11
7	88	666	102	1212	94	3.33	1183

- Here's your chance to buy one of the first Packer sons to sell in Canada
- Out of a Rambler 5162 female

2010	EPD's
BW	+1.3
WW	+35
YW	+65
Milk	+22
TM	+39

**246**

**RED MEM JUDGE 246W**



Male MTE 246W February 17 2009 #1508912

RED BECKTON JULIAN GG B571 OSF

**RED MESSMER JUDGE 36N OSF (1253637)**

RED MESSMER ESTHER 2254 OSF

RED BJR RAMBLER 5162 OSF

**RED MEM MINOLA 9P (1236037)**

RED MEM MINOLA 24D

AOD	BW	205D	WI	365	YI	ADG	Feb 11
5	93	643	97	1282	109	3.86	1240

- Big, thick bull out of the Minola Family
- Rambler 5162 makes a very productive female and Judge 36N is known for that too

Proj '10 EPD's
BW +0.4
WW +30
YW +56
Milk +14
TM +29

**Lot #248**



**248**

**RED MEM PACKER 248W**



Male MTE 248W February 18 2009 #1508913

RED MESSMER JOSHUA 019P OSF

**RED MESSMER PACKER S008 OSF (1481359)**

RED MESSMER MILLIE 124P OSF

RED BJR RAMBLER 5162 OSF

**RED MEM SPICY 18P (1217663)**

RED MEM SKYLAR 13G

AOD	BW	205D	WI	365	YI	ADG	Feb 11
5	90	674	103	1248	98	3.35	1212

- Brother sold last year to McIntyres.
- Good cow whose full sister sold at Red Round-up to Brazil

2010 EPD's
BW +1.3
WW +35
YW +63
Milk +19
TM +37





**250**

**RED MEM DOC 250W**

Male MTE 250W February 20 2009 #1508919

RED MLK CRK CUB 722 OSF

**RED WEBR DOC HOLLIDAY 2N OSF (1238369)**

RED WEBR MS DOLLY 1L OSF

RED GOLD-BAR KING V415 107K

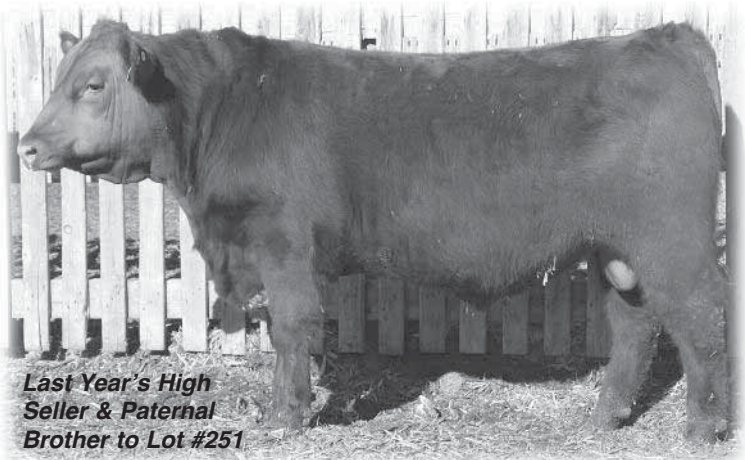
**RED MEM COUNTESS 34P (1222284)**

RED MEM COUNTESS 6F

AOD	BW	205D	WI	365	YI	ADG	Feb 11
5	84	636	97	1224	101	3.59	1181

• Doc puts a nice butt end and hip on his calves!

2010 EPD's
BW +0.5
WW +32
YW +60
Milk +17
TM +33



Last Year's High  
Seller & Paternal  
Brother to Lot #251

**251**

**RED MEM MUMBO 251W**

Male MTE 251W February 20 2009 #1508916

RED YY RED KNIGHT 640F OSF

**RED TER-RON MAMBO 28K (1013334)**

RED ALDER ABG STAR DUST 8G

RED GLACIER MARIAS 548 OSF

**RED MEM HOLLY 36J (963130)**

RED HOLLY 3059

AOD	BW	205D	WI	365	YI	ADG	Feb 11
10	59	582	92	1161	99	3.57	1118

• HEIFER BULL

2010 EPD's
BW -1.8
WW +24
YW +49
Milk +16
TM +28

**253**

**RED MEM KARWEIK 253W**



Male MTE 253W February 21 2009 #1508878

RED NORTHLINE ROB ROY 122K OSF

**RED BRYLOR/WSP KARWEIK 1P (1237322)**

RED DMM MISS ESSENCE 58M

RED WINDY HILL LED 423P

**RED MEM MONA 35T (1384889)**

RED MEM MONA 36L

AOD	BW	205D	WI	365	YI	ADG	Feb 11
2	70	664	105	1175	87	3.25	1064

• **HEIFER BULL**

2010 <b>EPD's</b>
<b>BW</b> +0.7
<b>WW</b> +29
<b>YW</b> +47
<b>Milk</b> +15
<b>TM</b> +29

**258**

**RED MEM DOC 258W**



Male MTE 258W February 21 2009 #1508921

RED MLK CRK CUB 722 OSF

**RED WEBR DOC HOLLIDAY 2N OSF (1238369)**

RED WEBR MS DOLLY 1L OSF

RED LMB GOLDEN BOY 719 OSF

**RED MAC MISS GOLDIE 12L (1071629)**

RED GEM FOXY LADY 47F

AOD	BW	205D	WI	365	YI	ADG	Feb 11
8	85	754	118	1394	110	4.18	1350

• This cow does it every year with her high selling in 2006 going to T Bar K and another son to Trevor Virostek

2010 <b>EPD's</b>
<b>BW</b> +1.8
<b>WW</b> +47
<b>YW</b> +87
<b>Milk</b> +23
<b>TM</b> +47

**Lot #259**



**259**

**RED MEM MUMBO 259W**



Male (ET) MTE 259W February 23 2009 #1531572

RED YY RED KNIGHT 640F OSF

**RED TER-RON MAMBO 28K (1013334)**

RED ALDER ABG STAR DUST 8G

RED COAT

**RED MAC PINK COAT 106E (819346)**

RED MAC ALEXANDRA 9A

AOD	BW	205D	WI	365	YI	ADG	Feb 11
ET	94	668	100	1220	100	3.43	1175

- **HERD BULL** whose dam we thought enough of to flush and could have 3 sons out of her next year!
- Dam of many herd sires - one is the sire of Lots #272 & #278
- Full sister just calved and is a beautiful female

2010 <b>EPD's</b>
<b>BW</b> +3.3
<b>WW</b> +36
<b>YW</b> +64
<b>Milk</b> +12
<b>TM</b> +30

**260**

**RED MEM DOC 260W**



Male MTE 260W February 23 2009 #1508923

RED MLK CRK CUB 722 OSF

**RED WEBR DOC HOLLIDAY 2N OSF (1238369)**

RED WEBR MS DOLLY 1L OSF

RED BRYLOR NEW TREND 22D OSF

**RED T-S COPPER LADY 202L (1128111)**

RED CLEAR RIVER SHOUT 78H

AOD	BW	205D	WI	365	YI	ADG	Feb 11
8	88	692	106	1241	94	3.55	1198

- A good Doc Holiday calf with great EPD's
- Sister sold in Red Round-up

2010 EPD's
BW +0.8
WW +36
YW +72
Milk +23
TM +42

**261**

**RED MEM MULBERRY 261W**



Male MTE 261W February 23 2009 #1508922

RED COMPASS MULBERRY 449M

**RED FINE LINE MULBERRY 26P OSF AMF (1237972)**

RED DUS FAYETTE 8G

RED GEIS PRIME RIB 411

**RED TR RIBBON 64K (1029406)**

RED MEM MISS BO 23H

AOD	BW	205D	WI	365	YI	ADG	Feb 11
9	80	644	99	1194	94	3.27	1147

- Out of a good cow that has produced many high sellers including one to Rodgers Red Angus

2010 EPD's
BW +0.6
WW +40
YW +75
Milk +18
TM +38

**265**

**RED MEM SAKIC 265W**



Male MTE 265W February 27 2009 #1508927

RED SIX MILE AVIATOR 217P

**RED SIX MILE SAKIC 832S OSF (1332064)**

RED SIX MILE SIERA 257P

RED BAKERS CENTURY

**RED MEM BAYBERRY 13M (1118544)**

RED WIL-SEL BAYBERRY 8J

AOD	BW	205D	WI	365	YI	ADG	Feb 11
7	79	570	87	1162	101	3.63	1100

- HEIFER BULL

2010 EPD's
BW +1.5
WW +32
YW +57
Milk +19
TM +35



Lot #267



**267**

**RED MEM HI HO 267W**

Male MTE 267W February 28 2009 #1508933

RED HOLDEN HI HO 574

**RED HOLDEN HI HO 7151 OSF (947539)**

RED DOUBLE FORK 061C

RED BADLANDS BONUS 702

**BLACK MEM TIBBIE 24N (1172467)**

REMINGTON'S TIBBIE 118C

AOD	BW	205D	WI	365	YI	ADG	Feb 11
6	89	657	100	1364	121	4.59	1290

- One of the younger bulls, but look at his performance, 4.59 lbs/day
- Good Fargo daughter out of the Tibbie cow family

2010	EPD's
BW	+3.6
WW	+36
YW	+64
Milk	+10
TM	+28

**272**

**RED MEM HAVASU 272W**

Male MTE 272W March 06 2009 #1508880

RED LCHMN GRND CANYON 1244G OSC

**RED 2D HOOD CANYON 12K (1030604)**

RED MAC PINK COAT 106E

RED BRYLOR NEW TREND 22D OSF

**RED MEM MINOLA 45R (1287309)**

RED MEM MINOLA 24D

AOD	BW	205D	WI	365	YI	ADG	Feb 11
4	91	711	109	1318	104	3.80	1219

- Out of one of our favorite cow families - the Minola family

2010	EPD's
BW	+4.0
WW	+41
YW	+78
Milk	+23
TM	+44

**278**

**RED MEM HAVASU 278W**

Male MTE 278W March 08 2009 #1508881

RED LCHMN GRND CANYON 1244G OSC

**RED 2D HOOD CANYON 12K (1030604)**

RED MAC PINK COAT 106E

RED BRYLOR PHOENIX 16K

**RED LAMBS SUE 18R (1257956)**

RED LAMBS CHEROK SUE 4K

AOD	BW	205D	WI	365	YI	ADG	Feb 11
4	95	634	95	1271	109	4.02	1166

2010	EPD's
BW	+5.0
WW	+38
YW	+71
Milk	+17
TM	+36